

GRACE

BIBLE

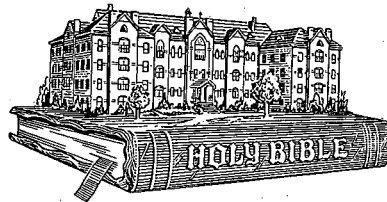
INSTITUTE

1955-1956

CATALOG

# Grace Bible Institute

1515 South Tenth Street  
OMAHA 8, NEBRASKA  
(Phone JACKSON 3377)



**Motto:**

*"Other foundation can no man lay than that  
is laid, which is Jesus Christ"*

## Catalog and Announcements

(Published by the Office of the Dean)

1955-1956

(1)

**Grace Bible Institute**

accredited by

The Accrediting Association of Bible Institutes  
and Bible Colleges

listed in

"Accredited Higher Institutions"  
of the United States Office of Education

member of

Nebraska Association of Colleges and Universities

approved by

The Nebraska Department of Public Instruction  
for the training of veterans

recognized by

The Selective Service System  
as a theological and divinity school

listed by

The United States Department of Justice  
for training of foreign students

member of

The Evangelical Teacher Training Association

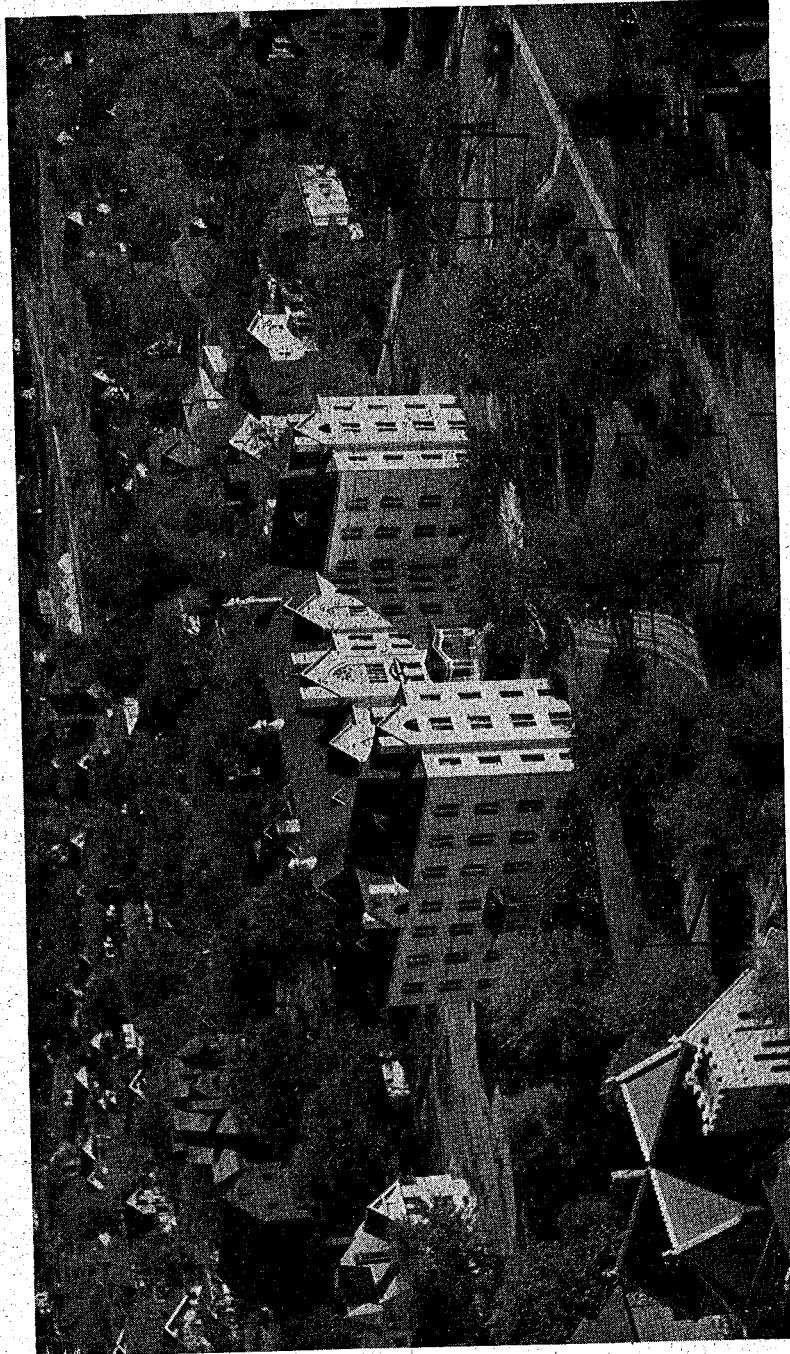
affiliated with

The National Association of Evangelicals

## TABLE OF CONTENTS

Accreditation .....	27
Advisory Council .....	9
Analysis of Enrollment .....	66
Application .....	28
Attendance Regulations .....	31
Auditing .....	26, 30
Bible Conferences .....	22
Board of Directors .....	9
Book Store .....	24
Calendar .....	5, 67
Courses Offered .....	27
Course Schedules, Three-Year Course .....	34
Course Schedules, Four-Year Courses .....	38-42
Course Schedules, Five-Year Courses .....	45-46
Daily Schedule .....	22
Description of Building .....	21
Description of Courses .....	47-57
Doctrinal Statement .....	6
Electives in Music .....	31
Employment of Students .....	23
Entrance Requirements .....	28
Evangelical Teacher Training Association .....	26
Evening School .....	67
Extracurricular Requirements .....	31
Faculty Personnel .....	13-19
Financial Information .....	25
Free Nights .....	58
Gospel Teams .....	59
Grading and Grade Points .....	30
Graduation Requirements .....	29, 32, 36, 43
Historical Sketch .....	7
Hospitalization .....	23
Hours of Study Required .....	30
Library .....	22
Load Carried .....	30
Macedonian Missionary Fellowship .....	58
Music Instruction, Private .....	54
Picnics .....	58
Practical Christian Work .....	22
Prayer Room .....	59
Private Tutorship .....	30
Public Relations Department .....	19
Refunds and Rebates .....	26
Register of Students .....	60-65
Rules and Regulations .....	23
Staff .....	12
Student Body Association .....	58
Student Streamers .....	58
Tuition .....	25
What to bring .....	24





An Air View of Grace Bible Institute

# CALENDAR 1955-1956

## Fall Semester 1955

September 6 — 8:00 a.m. — Entrance Examinations — New students.

(New students not present by 8:00 a.m. pay late registration fee of \$5.00.)

September 7-8—Orientation—New students.

September 6-7—Registration—Returning students.

(Returning students who have not registered by September 7, pay late registration fee of \$5.00)

September 8—Orientation—Returning students.

September 7-9—School Opening Evangelistic Services.

September 9—Classes begin. (1st quarter to November 4.)

September 10—Faculty reception to new students.

September 21—Fall school picnic.

September 26—Last day of late registration.

October 24-28—Mid-semester examinations.

October 31-November 4—Bible Conference Week.

November 1—Grace Fellowship Day.

November 7—Classes resume. (2nd quarter to January 20.)

November 23—(noon) Thanksgiving vacation begins.

November 29—Classes resume (Tuesday).

December 16—(noon) Christmas vacation begins. *Jan*

January 3—Classes resume (Tuesday).

January 16-20—Final examinations.

## Spring Semester 1956

January 16-19—Registration of returning students.

January 20—Registration of new students.

(Students not registered by January 20 pay late registration fee of \$5.00.)

January 23—Classes begin. (3rd quarter to March 16.)

January 25—Day of Prayer.

February 6—Last day of late registration.

March 12-16—Mid-semester examinations.

March 19-23—Missionary Rally Week.

March 26—Classes resume. (4th quarter to May 16.)

March 30—Good Friday—No classes.

May 2—Spring school picnic.

May 9-15—Final examinations.

May 13—Baccalaureate Sunday.

May 14—Alumni Day.

May 15—Class Night.

May 16—Commencement (Wednesday).

## DOCTRINAL STATEMENT

### I

We believe that the Scriptures of the Old and New Testaments are the infallible Word of God, a divine revelation, the original autographs of which were verbally inspired by the Holy Spirit, and that they are the supreme and final authority of faith and conduct. 2 Tim. 3:16,17; 2 Pet. 1:21.

### II

We believe in one God, eternally existing in three persons: Father, Son, and Holy Spirit. Matt. 3:16,17;28:19,20; 2 Cor. 13:14.

### III

We believe that Jesus Christ was begotten by the Holy Spirit, was born of a virgin, and is truly God and truly Man. Gen. 3:15; Matt.1:18; Phil. 2:5-8.

### IV

We believe in the resurrection of the crucified body of our Lord, in His ascension into heaven in that body glorified, in His present life there for us as High Priest, in that "blessed hope," the personal, pre-millennial, and imminent return of our Lord and Saviour Jesus Christ for the Church, and in His "glorious appearing" with the Church to set up His earthly kingdom. Jn. 20:20; Acts 1:9-11; Heb. 4:14-16; Tit. 2:13; 1 Thess. 4:13-18; Acts 15:16.

### V

We believe that the Holy Spirit is a person, is co-equal with God in all His attributes, and is sent by the Lord Jesus Christ from the Father, to convict the world of sin, to regenerate, indwell, guide, and teach the believer, and to empower him to live in victory over sin. John 15:26; Jn. 16:7, 8, 13.

### VI

We believe that man was created in the image of God, but in the sin of the first Adam the whole human race fell, and apart from Christ, is spiritually dead and lost. Gen 1:26; Rom. 5:12; Rom. 3:23.

### VII

We believe that Jesus Christ died a substitutionary death upon the Cross, by grace providing salvation for all who believe on Him, justifying them on the ground of His shed blood. Eph. 1:7; 2-8; 1 Pet. 2:24.

### VIII

We believe that all who by faith receive the Lord Jesus Christ as their personal Saviour become the children of God, that eternal life is a present possession, that at death their spirits depart to be with Christ in conscious blessedness, and that at Christ's coming for the Church their bodies shall be raised, and, together with the believers then living on the earth, transformed into the likeness of the body of His Glory. Jn. 1:12,13; 5:24, I Cor. 15:51.

### IX

We believe that all who persistently reject Jesus Christ in the present life will after the thousand years be raised from the dead, and throughout eternity exist in a state of conscious and endless torment. Rev. 20:11-15.

### X

We believe that the Church consists of all those who, in this dispensation, truly believe on Jesus Christ, that it is the body and bride of Christ, and that its mission is to witness for Christ among all nations. Acts 15:14; Acts 1:8.

### XI

We believe in the reality and the personality of Satan, a subtle being who ultimately will be cast into the lake of fire. Rev. 20:10.

### XII

We believe in a consistent Christian life and abstaining from worldly practices, such as swearing of the oath, affiliation with secret societies, using courts for settling disputes among believers, taking personal vengeance and participating in carnal strife, and divorce as forbidden by the Lord. I Jn. 2:15-17; Rom. 12:2; James 5:12; 2 Cor. 6:14,17; I Cor. 6:7,8; Rom. 12:17-21; Rom. 13:9; Mat. 19:9.

## HISTORICAL SKETCH

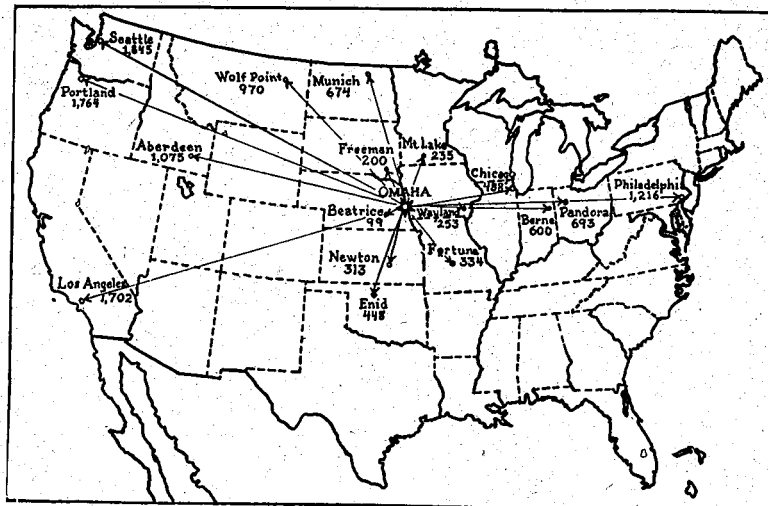
For many years the need of a Bible Institute for the training of Christian workers in the Mennonite denomination had been keenly felt by many of its ministers and laymen. It was their hope and prayer that an inter-Mennonite school with a central location might some day be established.

With this need in view, a group of interested ministers and representatives of the Oklahoma Bible Academy of Meno, Oklahoma, met at Omaha on June 1, 1943. The group soon clearly realized that the Lord had definitely guided them in the selection of that city as a meeting place, inasmuch as unique possibilities for the locating of the Bible Institute presented themselves while the group was in session. The Presbyterian Theological Seminary had just closed its doors and the buildings were graciously offered to the Grace Bible Institute. It was an answer to prayer and God provided exceeding abundantly above all that we could ask or think.

On September 8, 1943, Grace Bible Institute was formally opened in the Seminary building, with an enrollment of 18 students which in a few days grew to 23. Five faculty members were engaged by the Board, but the number was increased to six through the coming of Dr. C. H. Suckau in January to become the first president of the School. During the second semester of the school year the enrollment increased to 40 students.

On the opening day of school, September 8, a purchase contract was signed through a real estate agency in Omaha for the purchase of a permanent building, known as Stuntz Hall, located five blocks south of the railway station along 10th Street. The purchase price of \$25,000 was to include the 275 by 300 foot lot, the four-story building itself, and all the appurtenances.

The Lord graciously and marvelously supplied the means through the generosity of His people so that on February 5, a day set aside for prayer, the papers were completed and the final payment was made in full. How we praise God for giving us this wonderful building and how we thank our many friends for their faithfulness in giving of the Lord's money to make this possible!



Map showing the central location of Omaha

Towards the end of January the Presbyterian Theological Seminary was approached by the United States government regarding converting their Seminary building into an apartment house. We were then requested to vacate the Seminary as soon as possible. This was done during the weekend of March 25, when the student body and faculty were moved to our present location. We praise God for His wisdom and guidance in timing these events, so that we could so soon be permanently located.

During the following two years the need for increased dormitory space was the most pressing problem. By the help of friends, several large homes in the neighborhood were acquired. During the summer of 1949, after much prayer and deliberation, the new basement auditorium was constructed. This structure was designed to serve as the foundation for a gymnasium-chapel to be built as funds are provided. Later additions to the school's facilities are a snack shop and a fine Wurlitzer Organ. Again we feel constrained to praise God for his wonderful provision of every physical need.

But the blessings have not only been material. Many young lives have been yielded to the Lord's will and have been trained for His service. Graduates and former students are today serving the Lord in various foreign and home mission fields, or are upholding a Christian testimony in other walks of life. Our prayer is that the Lord may abundantly use their testimony for the completion of His purpose in calling out a people for His name in this age of grace.

While Grace Bible Institute is operating particularly to meet the need of the young people of our denomination, it is in no way the purpose to limit the student body to those of one denomination exclusively. Rather the school shall be open to all men and women of any denomination who feel the call of the Lord to serve Him, and who desire to prepare for that work. The school is not governed by any denomination or conference, but by men of God who have at heart the spreading of the Gospel, and these covet the prayerful support of true Christians everywhere.

#### STATISTICAL GROWTH OF GRACE BIBLE INSTITUTE

	1943-44	45	46	47	48	49	50	51	52	53	54	55
Students	40	93	168	278	312	331	317	301	316	306	317	325
Denominations and Groups	7	9	17	24	26	23	25	23	19	22	22	22
States and Countries	12	13	14	18	21	19	19	22	27	27	31	30
Graduates	0	3	8	30	37	61	69	77	52	59	61	53
Faculty	6	7	12	16	16	17	19	20	21	20	20	20
Board of Directors	8	10	10	10	12	13	13	13	13	13	13	14
Advisory Council	14	36	38	43	54	62	62	74	78	87	86	98
Buildings	1	4	6	6	6	6	7	7	7	7	7	7
Net worth in thousands (end of school year)	25	39	51	78	243	261	278	298	310	321	314	

## ADMINISTRATION

### Board of Directors

Rev. D. J. Unruh, Elbing Kansas (1958) .....	President
Rev. Reuben Short, Archbold, Ohio (1959) .....	Vice-President
Rev. Frank S. Harder, Salem, Oregon (1957) .....	Secretary
Rev. August Ewert, Omaha, Nebraska (1958) .....	Treasurer
Rev. J. R. Barkman, Henderson, Nebraska (1960) .....	Member
Dr. H. D. Burkholder, Dallas, Oregon (1959) .....	Member
Mr. Frank Busenitz, Whitewater, Kansas (1960) .....	Member
Rev. C. A. Classen, Marion, South Dakota (1958) .....	Member
Rev. H. P. Fast, Reedley, California (1956) .....	Member
Dr. P. C. Hiebert, Hillsboro, Kansas (1956) .....	Member
Dr. L. Gilbert Little, Wichita, Kansas (1960) .....	Member
Rev. B. D. Reimer, Steinbach, Man., Canada (1957) .....	Member
Rev. A. H. Schultz, Mountain Lake, Minnesota (1959) .....	Member
Rev. Edwin F. Walter, Hutchinson, Kansas (1956) .....	Member
Rev. P. A. Kliewer, Corvallis, Oregon .....	Honorary Member

### Advisory Council

Rev. L. R. Amstutz .....	Mountain Lake, Minnesota
Mr. P. C. Andres .....	Newton, Kansas
Mr. John Auckland .....	Arkport, New York
Mr. Wm. S. Bartel .....	Portland, Oregon
Mr. John Bartsch .....	Newton, Kansas
Rev. J. W. Bergen .....	Colby, Kansas
Mr. Norman Berky .....	Bally, Pennsylvania
Rev. H. E. Bertsche .....	Archbold, Ohio
Mr. Phares Bixel .....	Bluffton, Ohio
Rev. P. J. Boehr .....	Enid, Oklahoma
Rev. Paul Dahlenburg .....	Bridgewater, South Dakota
Rev. Dan U. Dalke .....	Whitewater, Kansas
Rev. Henry Dalke .....	Yakima, Washington
Rev. Leon Detweller .....	Mann's Choice, Pennsylvania
Rev. William G. Detweller .....	Orrville, Ohio
Rev. H. H. Dick .....	Mountain Lake, Minnesota
Dr. John R. Dick .....	Omaha, Nebraska
Rev. Walter J. Dick .....	Richfield, Pennsylvania
Rev. H. B. Dirks .....	Los Angeles, California
Rev. Virgil Dirks .....	Meno, Oklahoma
Rev. Edward Duerksen .....	Butterfield, Minnesota
Rev. Marvin Eck .....	Tulsa, Oklahoma
Mr. Walter O. Ediger .....	Hutchinson, Kansas
Rev. Ed Enns .....	Gridley, Illinois
Mr. John Epp, Jr. ....	Whitewater, Kansas
Rev. Theodore Epp .....	Lincoln, Nebraska

## Advisory Council (continued)

Rev. J. J. Esau ..... Reedley, California  
 Rev. Albert Ewert ..... Bridgewater, South Dakota  
 Rev. Waldo Flickinger ..... Orienta, Oklahoma  
 Rev. A. L. Friesen ..... Inman, Kansas  
 Mr. John R. Friesen ..... Geneva, Nebraska  
 Rev. J. J. Gerbrandt ..... Reedley, California  
 Mr. Alvin L. Goossen ..... Colby, Kansas  
 Rev. George Groening ..... Winnipeg, Manitoba, Canada  
 Rev. Henry R. Harms ..... Dallas, Oregon  
 Dr. Lando Hiebert ..... Hillsboro, Kansas  
 Mr. Irvin Hilty ..... Pandora, Ohio  
 Mr. Ed. Holzworth ..... Glendive, Montana  
 Rev. F. F. Jantzen ..... Paso Robles, California  
 Rev. G. H. Jantzen ..... Fresno, California  
 Rev. L. W. Jantzen ..... Tempe, Arizona  
 Rev. Lester E. Jantzen ..... Perkasio, Pennsylvania  
 Rev. J. C. Kaufman ..... Freeman, South Dakota  
 Dr. Milo Kaufman ..... Hesston, Kansas  
 Rev. W. Harley King ..... Filer, Idaho  
 Rev. J. J. Kleinsasser ..... Bridgewater, South Dakota  
 Mr. Joseph A. Kleinsasser ..... Yale, South Dakota  
 Mr. Harold J. Kroeker ..... Henderson, Nebraska  
 Rev. Paul Kuhlmann ..... Omaha, Nebraska  
 Rev. Howard T. Landes ..... Keswick Grove, New Jersey  
 Dr. P. R. Lange ..... Hillsboro, Kansas  
 Rev. Walter McDowell ..... Delft, Minnesota  
 Rev. V. E. Nickel ..... Wymark, Sask., Canada  
 Mr. Wilbur B. Nussbaum ..... Berne, Indiana  
 Rev. Hellmuth Ortman ..... Munich, North Dakota  
 Rev. Arthur F. Ortmann ..... Warroad, Minnesota  
 Rev. D. C. Pauls ..... Inman, Kansas  
 Rev. H. H. Quiring ..... Mountain Lake, Minnesota  
 Rev. Ben Rahn ..... Inman, Kansas  
 Rev. Alfred Regier ..... Ogallala, Nebraska  
 Rev. D. A. Regier ..... Mountain Lake, Minnesota  
 Rev. J. J. Regier ..... Omaha, Nebraska  
 Mr. Otto Regier ..... Buhler, Kansas  
 Rev. Walter H. Regier ..... Clinton, Oklahoma  
 Rev. Wilbert A. Regier ..... Omaha, Nebraska  
 Rev. G. S. Rempel ..... Steinbach, Manitoba, Canada  
 Rev. N. N. Roeschley ..... Peoria, Illinois  
 Rev. H. P. Roszhart ..... Aurora, Nebraska  
 Mr. Maurice M. Rupp ..... Fort Wayne, Indiana  
 Mr. John Schrag ..... Omaha, Nebraska

## Advisory Council (continued)

Rev. David P. Schultz .....	Dallas, Oregon
Rev. G. P. Schultz .....	Chicago, Illinois
Rev. A. C. Siebert .....	Gothenburg, Nebraska
Mr. Benjamin Sprunger .....	Berne, Indiana
Rev. John P. Suderman .....	Pandora, Ohio
Rev. J. A. Tieszen .....	Sioux Falls, South Dakota
Mr. A. F. Toavs .....	Wolf Point, Montana
Rev. Dan Toavs .....	Exeter, California
Rev. A. P. Toews .....	St. Louis, Missouri
Rev. J. J. Toews .....	Kitchener, Ontario, Canada
Rev. Rudolf Toews .....	Aberdeen, Idaho
Mr. John S. Tschetter .....	Doland, South Dakota
Rev. Paul Tschetter .....	Winona Lake, Indiana
Rev. P. P. Tschetter .....	Kingman, Kansas
Rev. Richard Tschetter .....	Cordell, Oklahoma
Rev. Jacob Unruh .....	Jackson, Mississippi
Rev. J. W. Vogt .....	Germany
Mr. Paul E. Vogt .....	Hesston, Kansas
Mr. Ernest Voth .....	Orienta, Oklahoma
Rev. Thomas R. Walker .....	Grove City, Minnesota
Mr. Orlando J. Wall .....	Frazer, Montana
Mr. Carl Waltner .....	Dallas, Oregon
Mr. Elmer D. Widmer .....	Salem, Oregon
Rev. H. P. Wiebe .....	Abbotsford, B. C. Canada
Mr. John B. Wiebe .....	Newton, Kansas
Rev. A. K. Wiens .....	Omaha, Nebraska
Rev. R. M. Yoder .....	Congerville, Illinois
Rev. Gordon G. Zimmerman .....	Wauseon, Ohio



**An air view of the heart of Omaha**

(The Institute is located a few blocks to the right of the upper right corner, this side of the Missouri River.)



## Officers of Administration

Joseph W. Schmidt .....	Interim President
John R. Dick .....	Dean
August Ewert .....	Business Manager
Paul Kuhlmann .....	Registrar
John Schrag .....	Dean of Men
Marion S. Stanford .....	Dean of Women
Wilbert A. Regier .....	Director of Practical Work
James P. Davies .....	Director of Music
Huldah E. Myers .....	Librarian

## Standing Committees of the Faculty

Administration of the School .....	President, Dean, Business Manager
Committee of Admissions.....	Dean, Registrar, Dean of Men, Dean of Women
Hospitalization Committee .....	Bus. Manager, Dean of Men, Dean of Women
Curriculum Committee.....	Dean, Registrar, Department Heads
Library Committee .....	Librarian, Dean, Department Heads

## The Staff

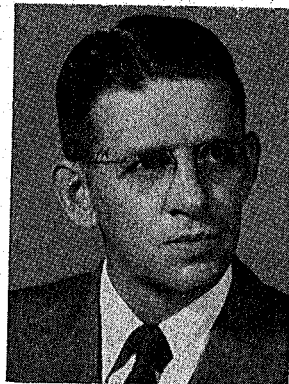
Secretary to the President .....	Arlene Dietz
Secretary to the Dean .....	Arlene Becker
Assistant to the Business Manager .....	Ruth Hofstetter
Assistant to the Registrar .....	Esther Penner
Secretary to the Practical Work Director .....	
Assistant Librarian .....	Marie Thomas
Student Employment .....	Mrs. Marie Hooge
Matron .....	Marie Dick
School Nurse .....	Elma Ediger
Information Desk .....	Mrs. Edward Schellenberg
Dietician .....	Hilda Harms
Cooks .....	Hulda Deckert, Elizabeth Kroeker, Mrs. Dan Wiens
Custodian .....	Erich Krehbiel

## Faculty

### JOSEPH W. SCHMIDT

**Interim President**

Tabor College, 1940-1942; Graduate Teacher Training Course, 1942; McPherson College, 1942; Grace Bible Institute, 1945-1947; University of Omaha, 1945-1947, A. B., 1947; Th. M., Central Baptist Theological Seminary, 1950; Th. D., Central Baptist Theological Seminary, 1954. Positions: Teacher, Public School, 1942-1943; Student Pastor, Kent, Iowa, 1945-1947; Pastor Nettleton Church, Nettleton, Missouri, 1948-1950; Grace Bible Institute, 1950-

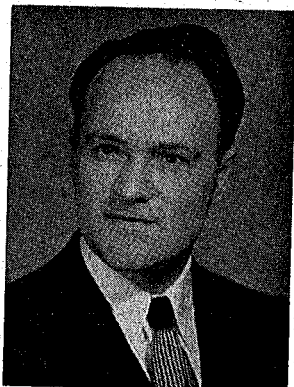


### JOHN R. DICK

**Dean**

**Instructor in Bible**

Graduate Winnipeg Normal School, 1930; Graduate Moody Bible Institute, 1938; A. B. Morningside College, 1945; A. M., University of Omaha, 1951; D. R. E., Southwestern Baptist Theological Seminary, 1953. Positions: Teacher in public school in Canada, 1930-1936; Pastor, E. M. B. Church, Henderson, Nebraska, 1939-1941; Instructor, Henderson Bible School, 1939-1941; Pastor, E. M. B. Church, Luton, Iowa, 1941-1943; President, E. M. B. Conference, 1948-; Grace Bible Institute, 1943-

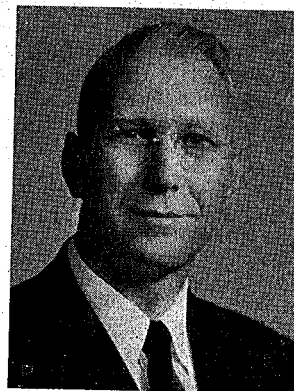


### AUGUST EWERT

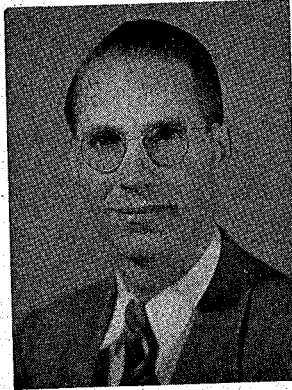
**Business Manager**

**Instructor in Missions**

Graduate Moody Bible Institute, 1926; Wheaton College, 1928-1929; College of Chinese Studies, Peking, 1929-1930; A. B., Bethel College, 1939. Positions: Missionary to China, 1929-1941; Pastor, Gospel Mennonite Church, Mountain Lake, Minnesota, 1942-1946; Grace Bible Institute, 1946-



## Faculty



**PAUL KUHLMANN**

**Registrar**

Graduate Bible Institute of Los Angeles, 1935; Extension Study, Central University, 1942, 1946; Wheaton College, 1945; A. B. Midland College, 1950; M. A., University of Omaha, 1953. Positions: Missionary to China, 1936-1941; Principal, Tangshan Bible Institute, China, 1938-1941; Instructor, 1941-1942, and Superintendent, Oklahoma Bible Academy, 1942-1943; Grace Bible Institute 1943-

**JOHN SCHRAG**

**Dean of Men**

**Instructor in Philosophy, Psychology**

Hesston College and Bible School, 1924-1925; Bethel College, 1925-1927; Wheaton College 1928-1929, A. B., 1929; Graduate study, University of Kansas, 1929-1932, A. M., 1931; University of Chicago, 1932-1933; University of Nebraska, Summer, 1953; Positions: Teacher, Public School, 1927-1928; Instructor, Wessington Springs College, 1934-1935; Instructor, John Brown University, 1935-1945; Grace Bible Institute, 1945-



**MARION STUART STANFORD**

**Dean of Women**

**Instructor in Biological Science**

A. B., Albany College, 1917; Graduate study Columbia University, N. Y., 1928-1929; Oregon State College, 1932, 1935, 1938, 1941, 1944. Positions: Teacher, Lebanon High School, 1917-1918; Albany Senior High School, 1918-1945; Grace Bible Institute, 1945-



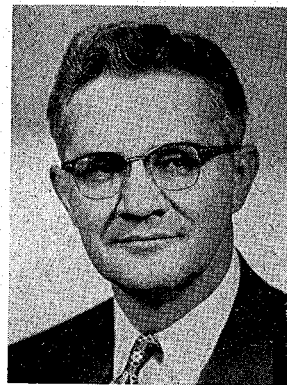
## Faculty

### WILBERT A. REGIER

Practical Work Director

Instructor in Bible

Th. B., Bible Institute of Los Angeles, 1938; University of Omaha, 1954. Positions: Pastor, Immanuel Mennonite Church, Los Angeles, California, 1938-1944; Pastor, Emmanuel Mennonite Church, Pratum, Oregon, 1944-1953; Instructor, Salem Academy, Salem, Oregon, 1952; Grace Bible Institute 1953-

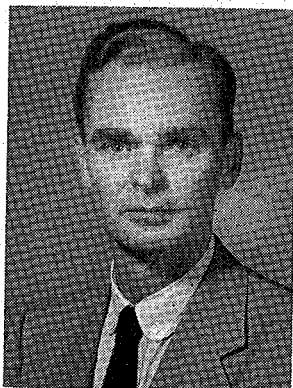


### JAMES P. DAVIES

Director Music Department

Instructor in Music Theory, Voice

A. B., John Fletcher College, 1936; Graduate Study, Minneapolis College of Music; 1941; University of Minnesota, 1944; University of Nebraska, 1952. Positions: Head of Music Department, Northwestern Schools, 1936-1945; Member, Faculty and Radio Staff, Moody Bible Institute, 1945-1947; Director of Music Department, Grand Rapids School of the Bible and Music, 1947-1948; Grace Bible Institute, 1949-



### HULDAH E. MYERS

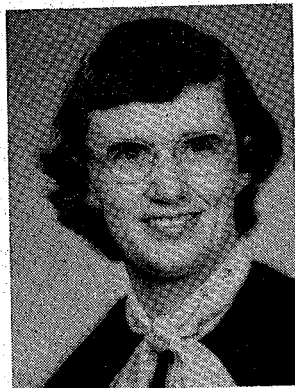
Librarian

Instructor in Christian Education

B. S., Ursinus College, 1933; Muhlenburg College, 1933; Temple University, 1935; Mankato State Teacher's College, 1949; University of Nebraska, 1951; University of Michigan, 1952. Positions: Teacher, Public School, 1933-1945; Mennonite Bible Academy, Beatrice, 1945-1947; Oklahoma Bible Academy, 1947-1950; Grace Bible Institute, 1950-



## Faculty



**WILMA AUGSBURGER**

Instructor in Voice, Piano

Grace Bible Institute, 1944-1947; John Brown University, 1948-1949; A.B., Bluffton College, 1951-1952; Taylor University, 1953; Positions: Meade Bible Academy, 1953-1955; Grace Bible Institute, 1955-

**MARIE DYCK**

Instructor in English, Typing

A. B., Bethel College, 1939; Graduate study, University of Omaha, 1948, 1949, 1951-1952, 1954. Positions: Teacher, Public Schools, 1934-1937; 1939-1948; Grace Bible Institute, 1948-



**SYLVIA MORGAN**

Organ, Piano, Theory, Strings

B. Mus., University of Illinois, 1945; M. Mus., University of Illinois, 1946; Methuen Organ Institute, summer, 1947; University of Colorado, summer, 1950. Teaching positions: Westmont College, Santa Barbara, California, 1946-1952; Lutheran Brethren Schools, Fergus Falls, Minnesota, 1953; Grace Bible Institute, 1954-



## Faculty

### ANNA RIEGER

Instructor in Christian Education

Graduate Northwestern Schools, 1935; A. B., Wheaton College, 1948; A. M., Wheaton College, 1951. Positions: Teacher, Mountain Lake Bible School, 1936-1946; Instructor, Wheaton College, 1948-1951; Grace Bible Institute, 1951-



### EDWARD T. SCHELLENBERG

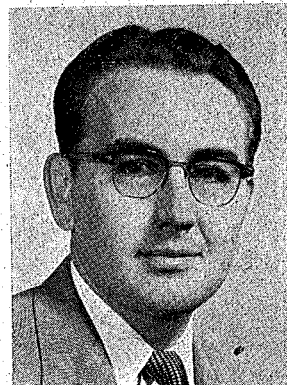
Instructor in Greek, Theology

Th. B., Bible Institute of Los Angeles, 1942; A. B., Tabor College, 1944; Th. M., Dallas Theological Seminary, 1947. Positions: Superintendent and Instructor, Church Bible Classes, M. B. Church, Shafter, California, 1947-1949; Grace Bible Institute, 1949-

### HENRY D. WIEBE

Instructor in Voice, Instrumental

Tabor College, 1945-1947; St. Paul Bible Institute, 1948; A. B., Nebraska Wesleyan University, 1951. Positions: Assistant Pastor and Minister of Music, Central Church, Lincoln, Nebraska, 1948-1950; Radio Staff of Back to the Bible Broadcast, Lincoln, Nebraska, 1948-1950; Instructor, Meade Bible Academy, Meade, Kansas, 1950-52; Grace Bible Institute, 1952-

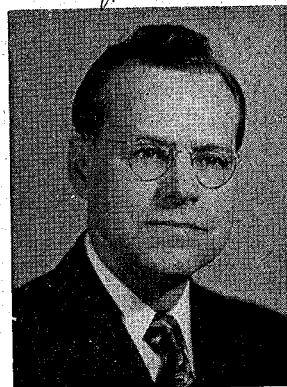


## Faculty

### A. K. WIENS

Instructor in Bible, History

A. B., Fresno State College, 1933; South Western Seminary, 1943-1944; A. M., University of Southern California, 1951; Summer Session, University of Nebraska, 1952, 1953, 1954. Positions: Teacher and Principal in public school, 10 years; Missionary to China, 1934-1941, 1947-1948; Pastor, K.M.B. Church, Yale, South Dakota, 1944-1947; Grace Bible Institute, 1949-

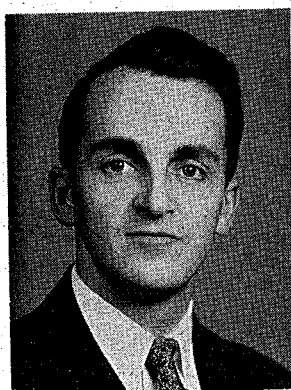


## Visiting Instructors

ANTON KOLAR, Omaha, Nebraska.....Radio Communication  
MRS. EINAR STEFFARUD, Des Moines, Iowa ..... Visual Aids

## Additional Faculty Members

Additional faculty members will be engaged for teaching in the field of Bible. Announcements will be made in the "Grace Tidings."



### C. M. GEORGE

(on special leave of absence)

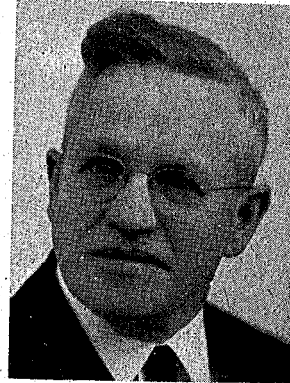
Graduate Moody Bible Institute, 1943; Wheaton College, 1944; University of Omaha; A. B., Midland College, 1950; Graduate study, University of Nebraska, 1951. Positions: Pastor, Presbyterian Church, Stapleton, Nebraska, 1945; Student Pastor, Emmanuel Methodist Church (Campus Chapel), Lincoln, Nebraska, 1951; Graduate Assistantship, Department of English, University of Nebraska, 1951; Grace Bible Institute 1943-



## Special Instructors

### F. A. JACOBSON

Metropolitan Conservatory, Chicago, 1919; Moody Bible Institute, 1919-1922; Graduate, Metropolitan Business College, Chicago, 1921; American Conservatory of Music, 1930-1931; North Park College, Chicago, 1932; North Park Seminary, Chicago, 1932; Morningside College, Sioux City, B. A., 1934. Positions: Evangelistic Work, 1923-1928; Moody Bible Institute Extension Department, 1927-1928; Pastor, Sloan, Iowa, 1930-1934; Chetek, Wisconsin, 1934-1942; Brenton, Washington, 1942-1944; Oyden, Iowa, 1944-1947; Du Bois, Pennsylvania, 1947-1953; Mead, Nebraska, 1953-; Grace Bible Institute, 1954-



### RICHARD B. SVEHLA, M. D.

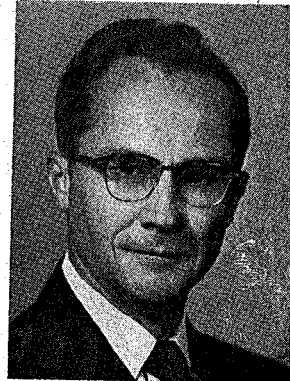
Premedical, Creighton University, 1942; Yale University, 1943; M. D., Creighton University, 1947; Interned, Mt. Carmel Mercy, Detroit, Michigan, 1947-1948; Graduate School, College of Medical Evangelists, 1948-1949; Surgical Resident, Iowa Methodist Hospital, 1949-1952. Positions: Surgeon, U. S. Army, 1952-1954; Private practice of surgery, Omaha, 1954-; Grace Bible Institute, 1955-

## Public Relations Department

### J. J. REGIER

Assistant to the President

Graduate, Bible Institute of Los Angeles, 1940; Freeman Junior College, 1943-1944; Summer school, School of Theology, Winona Lake, Indiana, 1944. Positions: Pastor, Burrton Mennonite Church, Burrton, Kansas, 1940-1943; Pastor, Salem Zion Church, Freeman, South Dakota, 1943-1949; Pastor, Grace Mennonite Church, Dallas, Oregon, 1950-1951; Teacher, Freeman Academy, 1944-1945; Field Representative, Grace Bible Institute, 1951-







The Student Body, Fall, 1954

## GENERAL INFORMATION

### Purpose of the Institute

As our Lord was about to leave this earth to take up His heavenly ministry, He committed the work upon earth to His disciples, saying: "Go ye into all the world and preach the Gospel to every creature"; "Go ye therefore and make disciples of all nations"; "Ye shall be witnesses unto me." To witness to the saving power of Christ requires preparation. It means to be both Word-filled and Spirit-filled. The objective of the Grace Bible Institute therefore is to train and send forth men and women who in their lives shall express the following characteristics:

1. A thorough knowledge of the Word of God whereby they may lead others to Christ and with wisdom instruct them to grow in grace;
2. A Spirit-filled life with a passion to win the lost;
3. A willingness and zeal to serve the Lord in their home church or wherever called by Him.

### Location and Advantages

According to the 1950 census, Omaha proper has a population of 251,117 (over a quarter million).

It is near the geographical center of the United States and lies in the heart of a great agricultural section of our country. Omaha ranks first among American cities in the production of butter, lead, and alcohol, and as a cattle market. In the field of transportation it is the fourth largest railroad center in the United States, the hub of ten trunk lines. Busses from all directions converge upon the city on five federal and many state highways. In the city itself an intricate system of 26 bus and street-car lines provide ready transportation to any part of the city. Employment opportunities are thus exceptionally good for both men and women, and in a city of its size all varieties of opportunities for practical experiences in Christian work present themselves.

The Institute itself is located in a residential section of the city five blocks south of the railway station and within walking distance of the main business district. The property covers the major portion of a large city block, being bounded on the west by Tenth, on the south by Pine, on the east by Eighth and on the north by Worthington Streets.

### Residence Facilities

The main Institute building consists of a central structure and two side wings. On the main floor will be found guest rooms, class rooms, offices, and reception rooms. On the third and fourth floors will be found the ladies' dormitories. These are heated with steam and are provided with all modern conveniences. Most rooms have hot and cold water, a closet, a bed, a dresser, a table, and two chairs. Pillows, sheets and pillow cases are furnished by the school, but curtains, which vary in size, towels, blankets, and spreads must be supplied by the student.

On the first floor in the south wing are additional class rooms and a prayer room. In the central structure are the kitchen and dining room. In the north wing are a spacious laundry and drying room and the caretaker's apartment.

Single men reside in two dormitories maintained by the school or in private homes near the Institute. Both dormitories provide laundry facilities for the men.

All unmarried men and women, whose homes are not in Omaha, are required to live in the dormitories.

Since space cannot be provided for part-time students, a load of twelve hours credit is required for residence in the dormitory. All married couples desiring to rent a temporary home are required (except by special permission) to live in apartments furnished by the school as long as these are available.

The Institute also offers free hospitality in the form of lodging and meals for one day to visiting ministers and missionaries.

#### **Practical Christian Work**

Effective training for Christian service demands practical experience. Omaha affords many splendid opportunities for such experience. Each student will receive assignments for several hours of practical Christian work each week. Students go out to hold services on the street, in hospitals, jails, factories, churches, Sunday Schools, missions or wherever needy souls are found. A special effort is made to give ministerial students the opportunity of supplying pulpits in various churches in and near Omaha. The department also offers special services to students on their assignments in the form of complete files of object lessons, pictures for story-telling, flannelgraphs, etc.

#### **Mid-Term Bible Conference**

In each semester, immediately after the mid-semester examinations, one week is set aside for special meetings. During these days students have the opportunity of hearing representatives from many fields of service speak. In fall, the Bible Conference will feature systematic Bible study, while in spring, the Missionary Rally will bring in missionaries from various parts of the world to present the need for workers. These conferences are intended to build up the spiritual atmosphere of the school, and help students find their God-appointed fields of service.

#### **Library**

A continued effort is made to make the library of increasing help to both faculty and students. At present it consists of approximately ten thousand volumes. In addition, several hundred books have been made available to us by the Board of Directors of the former Presbyterian Theological Seminary. The library regularly receives one hundred and forty-five magazines and periodicals, and the pamphlet file contains nearly four hundred booklets. The services made possible by the full-time librarian and assistant make the library a vital part of the educational program of the school. It is located in a separate building and is open daily, except Sunday.

#### **Daily Schedule**

Students arise in time to clean their rooms, spend a period of time alone with God, have breakfast, and begin classes at 7:00. There are five class periods during the forenoon with a devotional period from 9:45-10:05 between these. Classes end at 11:55. This schedule gives the student a maximum opportunity to assume employment responsibilities at noon, in the afternoons, or in the evening. Evening study hours, from 7:15-10, are observed five nights of the week and

the students retire at 10:30, with the exception of Friday and Sunday when students may retire at 11:00. Special late light privileges may be granted by permission of the Dean of Men or Dean of Women.

#### **Hospitalization**

Grace Bible Institute maintains a hospitalization plan, which provides hospitalization to faculty, staff, and students for 30 days within a year. All students paying the hospitalization fee are covered by this plan without additional cost to them. Families pay a small additional fee to cover members not enrolled in school. As the maintenance of this plan depends upon the cooperation of all, no refunds of the hospitalization fee will be granted to those already members of another plan or to those not desiring to enroll.

#### **Student Employment**

The student who comes with adequate resources to pay all his expenses will thereby conserve time and strength for his studies and has a decided advantage. When this is not possible, we strongly urge prospective students to come with sufficient funds to enable them to attend school without working more than three hours a day.

Opportunities have thus far been plentiful for both men and women to find work in homes, hospitals, cafes, stores, etc. The Institute also offers a limited number of part-time positions to students.

New students are limited to a maximum of 20 hours of work per week for their first semester. This means that to meet the expenses of the first semester they should have some resources available or the assurance of assistance from some relative or friend.

Students of the four-year courses will find that requirements of the courses are such that it may be difficult to maintain a full working schedule. We, therefore, strongly advise the prospective student of these courses to be prepared to assume a reduced working schedule.

As a rule, if a student must work more than 27 hours a week, or is weak in health, he will be asked to take a reduced schedule.

#### **General Regulations**

It is expected that students will cheerfully submit to the regulations which govern the educational, social, and spiritual life of the school, and thus help to create and uphold the highest spiritual standards.

Any student who persistently disregards any of the rules of the Institute, or whose presence undermines the spiritual atmosphere of the school, will be asked to withdraw.

The use of tobacco or liquor in any form is forbidden. Students also are expected to refrain from worldly amusements, attendance of theaters or movies, and other unclean habits that defile mind and body. The use of "make-up" is discouraged as not being in keeping with the spirit of the Institute.

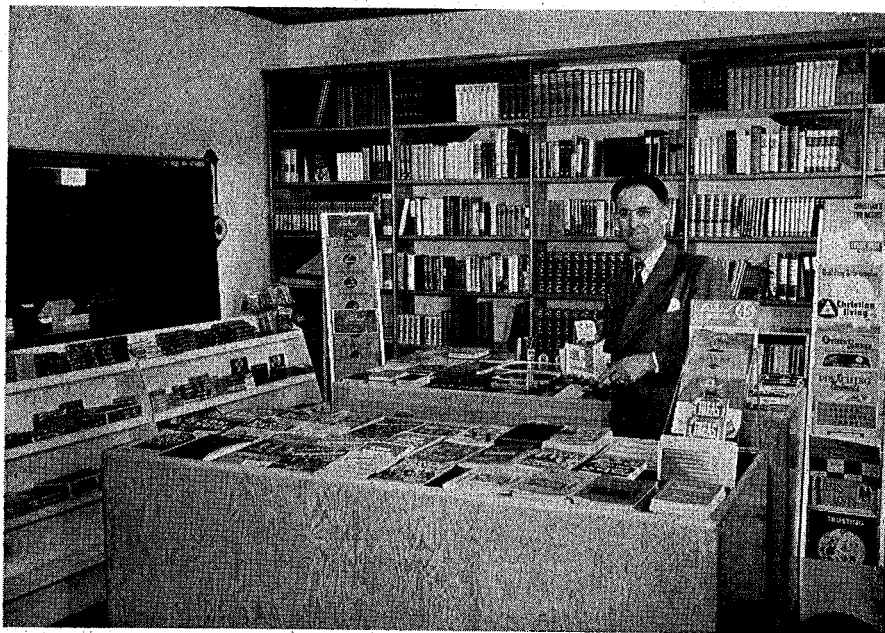
Because the operation of a car is costly and may easily tend to wasting of time and distraction from school work, we strongly urge unmarried students not to bring cars. If they wish to do so nevertheless, they, as well as married students, must strictly abide by school regulations governing the use of cars. Also, in compliance with Nebraska laws, they must carry liability insurance and have a valid driver's license. And if they live within the city limits of Omaha, they must also pay the regular four-dollar city wheel tax and within a

reasonable time take the car through the Omaha testing station. No student may operate a car that is not in condition to pass inspection. Single men and women students will be permitted to use a car together only by special permission from the Dean of Men. Students under 21 years of age must present written permission from their parents or guardian on forms provided by the school in order to have and operate a motor vehicle while attending the Grace Bible Institute.

A complete outfit of modest, but serviceable clothing should be brought by each student. We wish to discourage the wearing of elaborate, fashionable, or expensive clothing.

#### **What to Bring**

Bring a well bound Bible with not too small type (the large size Scofield Reference Bible is highly recommended), a good quality pen, some good Biblical reference books, and loose-leaf notebooks. For your rooms you will need blankets or quilts, towels, and a bed-spread. Inexpensive curtains may be purchased after arrival. (Shades are part of the school equipment.) Supply yourself with a warm coat and overshoes. All the rooms have a dresser with a mirror. For your convenience you should also bring an alarm clock and an electric iron. Bibles, textbooks, commentaries, concordances, Bible dictionaries, as well as a good dictionary of the English language are necessary equipment for every student, but these may be obtained upon arrival through the Grace Book Store.



**The Grace Book Store, Ed. B. Reimer, Manager.**

## FINANCIAL INFORMATION

As a training school for Christian workers, the Institute seeks to keep all expenses at a minimum in order not to bar those of limited means from attending. To maintain certain academic standards, however, a considerable outlay of finances is involved. As a result a moderate tuition and several lesser fees are charged. All fees and prices are subject to change.

### Tuition and Registration Fees

- \$ 5.00—Matriculation fee. (Payable at initial registration).
- \$ 6.00 per semester hour—Tuition.
- \$ 6.00 per semester—Registration fee. (1-6 credit hours.) (Includes registration \$3.00, and library fee \$3.00.)
- \$17.00 per semester—Registration fees. (over 6 credit hours) (Includes registration, \$3.00; library fee, \$3.00; Hospitalization fee, \$5.00; Infirmary service, \$3.00; Student Activity fee, \$3.00. The last includes a copy of the "Charis.")
- \$ 5.00—Late Registration.

### Room and Board

All single students whose homes are not in Omaha are required to room and board in the school's dormitories. To live in the school's dormitories, however, a student must carry a minimum load of 12 semester hours. Rates for room and board are as follows:

- \$126.00 per semester—Board.
  - 54.00 per semester—Room with two or more in room.
  - 72.00 per semester—Room for single person.
- Vacation weeks not included in the semester are extra.

### Books and Supplies

The Grace Book Store, operated in connection with the Institute, maintains a reasonable stock of Bibles, textbooks, reference material and student supplies. Estimated cost of books and supplies per semester is \$20.00 to \$30.00.

### General Regulations

All bills are due and payable in advance at the beginning of each semester. However, in cases of inability to pay in full, the student may make application for a deferment of a portion of his enrollment invoice according to the deferment plan.

For the fall semester of each school year the deferred payment plan provides that the student pays one half of his enrollment invoice (this includes registration, tuition, all other fees, and room and board) at the time of registration. The balance is to be paid in three equal installments which are due at the end of the 4th, 8th and 12th weeks of the semester.

For the second or spring semester the deferred payment plan provides that the student pays one-fourth of his enrollment invoice at the time of registration. The balance is to be paid in three equal installments which are due at the end of the 4th, 8th and 12th weeks of the semester.

Any student whose account is delinquent more than \$25.00 must make special arrangement with the Business Manager in order to remain in school.



No student will be permitted to take private music lessons unless he is able to keep his regular accounts paid up.

A charge of \$2.00 will be made each time the payment on the deferred plan is not made by the date it is due.

Students whose accounts are not fully paid by the time of final examinations forfeit their right to credit in a course taken, and all grades of the semester will be considered an "F" until the account is settled. Maximum time allowable for settling such accounts is 30 days. Accounts of one semester must be settled in full before enrollment in another semester is permitted.

Accounts with the Institute must be settled in full before grades, transcript of credits or diplomas are issued.

#### **Student Deposits**

The Institute provides for student deposits in the Business Office as an accommodation to students and parents. Pass books are used, and students may write counter receipts against their deposits. There is no charge for this service, and no interest is paid on deposits.

#### **Refund Schedule**

Since all accounts with the Institute are due and payable at the beginning of the semester, refunds will be made as they apply to students who withdraw from school or who drop classes.

Room and Board—95% of the unused balance.

Private and class music lessons—95% of unused balance.

All other fees, except the tuition fee, are not refundable.

Refund of the tuition fee will depend upon the length of time a student has been in attendance. The percentage of tuition fees refunded will be as follows:

Registration week—all

Second week—80%

Third week—40%

Fourth week—20%

After fourth week—None

#### **Special Fees**

The following is a schedule of special fees payable only by those students to whom they apply:

\$1.50 per half hour period—private music instruction in piano, voice, or instrumental.

2.00 per half hour period—private organ instruction.

.75 per half hour period—piano or voice class.

5.00—Laboratory fee, Science class.

2.00—Laboratory fee, Photography class.

4.00—Diploma or certificate.

6.00—Degree

2.25—Diploma of Evangelical Teacher Training Association.

8.00 per hour—Courses by private tutorship (subject to approval of the Dean.)

6.00 per semester hour—Auditor tuition fee.

3.00—Auditor registration fee.

1.00—Transcript of credits (after the first).

## ACADEMIC INFORMATION

### Accreditation and Standing

Grace Bible Institute is an accredited member of the Accrediting Association of Bible Institutes and Bible Colleges, and is listed in the 1952 edition of "Accredited Higher Institutions" issued by the United States Office of Education, and in the "Educational Directory of Higher Education" issued by the Federal Security Agency annually. The Accrediting Association is a constituent member of the American Council on Education.

Grace Bible Institute is approved by the Nebraska Department of Public Instruction for the training of discharged service men and women under the Servicemen's Readjustment Act (G. I. Bill of Rights).

Grace Bible Institute is also approved by the United States Department of Justice for the training of students from foreign countries, by the U. S. Civil Service Commission for recognizing graduates as eligible for Civil Service Examinations and by the U. S. Chief of Chaplains as providing the four years undergraduate training required for the Chaplaincy (to be followed by seminary training).

Grace Bible Institute is recognized by the Selective Service System as a theological and divinity school for the training of students preparing for the ministry.

Grace Bible Institute is also a gold seal member of the Evangelical Teacher Training Association and its graduates, who have completed the requirements of the standard teacher training course, are entitled to receive the gold seal diploma of that association.

Grace Bible Institute or its department directors hold membership in the National Association of Evangelicals, the Nebraska Library Association, and the American Association of Collegiate Registrars.

Grace Bible Institute may be classified as a Bible College offering undergraduate work with a Bible major leading to several baccalaureate degrees. Credits earned may be transferred at full value to many Christian colleges and in part to other colleges and universities where the student does not choose to follow a Bible major. Full transfer value for equivalent subjects is given students transferring to the University of Nebraska. The A. B. degree is received by a number of conservative seminaries as qualifying the student for work on the seminary level.

The New York State Department of Education has officially recognized the Accrediting Association of Bible Institutes and Bible Colleges as maintaining acceptable standards for four-year institutions, and approves the acceptance of credits earned in the association's accredited schools on a basis of equivalency.

### Courses Offered

In order to meet the variety of needs, Grace Bible Institute offers three types of courses:

1. **The Three Year Course**, leading to a diploma.
2. **The Four Year Courses**, leading to the A.B., B.R.E., and B.S.M. degrees.
3. **The Five Year Courses**, leading to the Th.B. and B.S. degrees.



## Entrance Requirements

### 1. High School Preparation

Because the Lord does call into His Service those who have been denied the privilege of education and uses them in winning souls, it is the desire of the Institute not to refuse admission to any of a mature age, (see under age), who feel the call of the Lord because of lack of previous education. However, to maintain our scholastic standards, all courses are adjusted to the abilities of those with a high school background. Therefore the entrance requirement for all courses include high school graduation. If the student is not a graduate of a high school or its equivalent, additional courses in English (English Grammar I and II) are required. Because of limited dormitory and class room space however, such students can be accepted only on a 5% quota basis.

### 2. Christian Character

It is assumed that those who come to the Institute are not only saved, but are definitely committed to God's will for their lives, and have a set purpose to prepare themselves to serve Christ. They should show willingness to work, to be taught, criticized, guided and helped. To assure some degree of spiritual maturity, all applicants should personally know Christ as Saviour for a period of at least one year.

### 3. Age

Minimum age for admission is 18 years. Special exceptions to this may be made if the applicant is a graduate of a high school.

Non-high school graduates below the age of 20 will not be accepted for admission but are expressly encouraged to complete their academic work before enrolling at the Institute.

### 4. High School Transcript

At the time the student applies for admission, he should also arrange to have a transcript of his high school credits sent. This record must be in the hands of the school, before final word of admission to regular standing can be given.

### 5. Application

Application for admission should be made on official blanks furnished by the school, and be in the hands of the Director of Admissions at least two weeks before the opening of school. Since the Institute can accept only a limited number of non-high school graduates, these are encouraged to apply several months in advance. The student shall fill out the application forms in full, enclose an application fee of \$1.00, and include a snapshot of himself. After the references have been heard from, and a transcript of his previous work is received, the student will be advised of the action of the Institute. The application fee will be retained by the Institute if the student fails to register as expected.

If a student who has attended the Institute withdraws from school for one or more semesters, or if a change in marital status takes place, he must fill out a re-application for admission form enclosing a re-application fee of \$1.00. The re-application fee will be retained by the Institute if the student fails to register as expected. All necessary forms may be obtained by writing to the Director of Admissions, Grace Bible Institute, 1515 So. 10th Street, Omaha 8, Nebraska.

### Advanced Standing

Students who have completed work in another Bible Institute, College, or Seminary may apply for advanced standing upon the presentation of an official transcript from the school previously attended. Work done will be evaluated on the following basis:

1. All credits transferred must fit into the general educational program of the Institute.
2. Credits earned in other accredited schools of collegiate level will be accepted at face value.
3. Credits earned in schools, holding associate membership in the A.A.B.I.B.C., will be accepted at face value provisionally, subject to validation by demonstrating the ability to maintain a "C" average (grade point average of 1) in 30 semester hours of work.
4. Credits earned in an uncredited college or Bible school may be validated by one of two methods at the discretion of the Dean:
  - (a) Comprehensive examination over each subject for which credit is desired.
  - (b) Provisional acceptance of not more than half credit, from transcripts showing at least a "C" average, subject to validation by demonstrating the ability to maintain a "C" average (grade point average of 1) in 30 semester hours of work.
5. Credits in the general field of Bible earned in Bible academies of high school level beyond the generally required 16 units of high school credit, will enable the student to be excused from equivalent lower level subjects (100-200 series). While the student receives no actual college credit for these subjects, it does avoid needless repetition and enables the student to concentrate his efforts upon more advanced subjects. The maximum from which a student may be excused will be 5 hours for each unit of high school credit.

### Graduation Requirements

The following are the graduation requirements of the Institute:

1. **Scholastic Rating.** The student must satisfactorily have completed the required subjects of the course chosen, be in possession of the prescribed number of credits, and have earned at least one grade point per semester hour credit.
2. **Character and Doctrine.** In addition to receiving satisfactory scholastic rating in his course, the student must also give evidence of strong Christian character and soundness of doctrine.
3. **Practical Christian Work.** As the Institute seeks to train for effective service, it is expected that a student also show commendable zeal and faithfulness in his practical Christian work assignments. A student is expected to carry at least one assignment during each semester's attendance at the Institute.
4. **Scripture Memory Requirement.** All students at the time of graduation are required to give evidence that they are able correctly to quote and give references of 300 Bible verses. This requirement keeps before the students the value of storing the Scriptures in their hearts and minds, and of being able to recall and use these with "success" in Christian work. (Joshua 1:8) 2 hours credit.

### **Class Preparation**

It is expected that students spend a minimum of 1½ hours in study for every hour of recitation in the study courses. Of music students one hour daily practice is required five days a week for piano or instrumental lessons, and half hour daily practice for voice.

### **Auditing**

The Institute will grant the privilege of auditing classes upon the payment of an auditing fee. Auditors are expected to attend all sessions of the class, be in their assigned seats, and come under the same general regulations as regularly enrolled students. Courses involving active participation may not be audited. Day school students are not permitted to audit classes except by permission of the Dean.

### **Private Tutorship**

In case of conflicts in the class schedule, certain subjects may, by special permission of the Dean, be taken by private tutorship, providing there is no other way of meeting the specific requirement. Students meet personally and regularly with the instructor and the work covered is the equivalent of that done in class. The fee for private tutorship is \$8.00 per credit.

### **Grading**

Credits are determined by recitations, theses, and examinations. The minimum passing grade on class work shall be 70%. Grading is carried out by the alphabetical scale as follows:

Grade	Grade Point	Description	Value
A	3	Excellent	94-100%
B	2	Good	87-93%
C	1	Average	78-86%
D	0	Poor	70-77%
F	-1	Failure	(below 70%)

The following marks are used in office record keeping:

E (conditional) becomes either D or F by the end of the following term. (Given only in continuation courses.)

Inc (incomplete) becomes F unless course is completed within one month after the end of a semester.

W (withdrawn) indicates course dropped while doing satisfactory work and with approval of counselor.

### **English Examination**

An examination in English is given to all students upon entering the Institute. Students making a low score will be asked to review the fundamentals of English grammar. Generally this will mean deferring the course in College English until the second year and may result in extending the student's stay at the Institute for an additional year unless he wishes to attend summer school.

### **Student Load**

The recommended load for each course is indicated by the number of hours listed in the following course schedules and shall not exceed seventeen hours. However, students of any course who during the previous semester have maintained a grade point average of at least 1.8 may, if they so desire, elect additional subjects, or assume extra hours of employment. Maximum load allowable under any circumstance shall be nineteen hours.

### **Class Attendance**

Students will be expected to attend all sessions of those classes in which enrolled. Absences will be excused by the Dean of Men or Dean of Women only upon presentation of a valid and acceptable reason. Excessive absence or tardiness will result in grade point deduction.

### **Extracurricular Requirements**

All first year students are required to attend the Orientation I and II classes which deal with study methods and Christian etiquette.

Every student is expected to attend Mission Hour each Friday.

Every student is expected to carry a Practical Christian Work assignment during every semester of attendance. One grade point is given for this experience.

### **Honors**

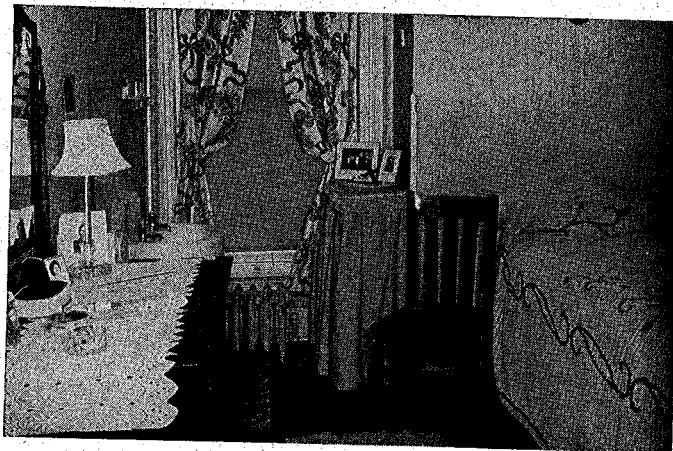
Graduation honors are awarded on the following basis: With Honor, to those averaging 2.2 grade points per semester hour or over; with High Honor when averaging 2.5 or over, and with Highest Honor when averaging 2.8 or over.

### **Electives in Music**

A maximum of four hours of applied music will be accepted towards graduation in any of the non-music courses. Likewise, a maximum of four hours in Chorale, Chorus or Band will be accepted in a non-music course.

### **Grace Scholarship**

A scholarship will be granted to four worthy Christian high school graduates. The applicant should have a grade average of not less than "B"; plan to enter full-time Christian service; have a genuine love for souls; be teachable, discreet and cooperative, and meet the entrance requirements of Grace Bible Institute. Application for scholarship should be addressed to the Dean of Grace Bible Institute not later than three months prior to enrollment.



—| |—  
**A room in the  
dormitory**  
—| |—

## THE THREE YEAR COURSE

### Purpose and Aim

The three year course is designed for students who desire a general knowledge of God's Word but who do not have the time to complete a four year course or the inclination to work for a degree. The course provides the student with a workable knowledge of the Bible and an understanding of God's will for the life of the individual believer. Emphasis is placed upon the mastery of the English Bible and effectiveness in soul winning.

### Fields of Concentration

Essentially, the three year course offers a maximum of Bible subjects, a minimum in general education, and a wide variety of electives. By carefully choosing the electives, the student may achieve a general proficiency in a number of fields, or he may concentrate upon some area in which he is particularly interested. Areas of concentration, if desired, might be as follows:

#### Missions

Specific electives recommended include:

##### Second Year

Anatomy and Physiology  
History of Missions  
Fundamentals of Medicine  
Non-Chr. Religions

##### Third Year

Missionary Princ. & Prac.  
Homiletics  
Anthropology  
Audio-Visual Aids

#### Christian Education

Specific electives recommended include:

##### Second Year

Chr. Ed. of Child I, II  
Chr. Ed. of Youth  
Child Psychology

##### Third Year

Chr. Ed. of Adults  
Audio-Visual Aids  
Church Administration  
Chr. Ed. Seminar

Besides the two fields illustrated above, the student may plan his own fields with subjects taken from such areas as music, psychology, philosophy, theology, or history. In any case, the choice of electives is left to the interest of the student and is subject only to meeting prerequisite requirements.

### Graduation Requirements for the Three Year Diploma:

1. Completion of 92 hours credit with an equivalent number of grade points.
2. A minimum of one year in residence at Grace Bible Institute with not less than 30 hours credit.

3. Evidence of strong Christian character and soundness of doctrine.
4. Evidence of commendable zeal and faithfulness in practical Christian work.
5. Completion of the following specific curricular requirements:

**Biblical Subjects .....50 credits**

Textual Bible .....30

- 12 hours survey
- 6 hours analysis
- 12 hours exposition

Theology ..... 9

Personal Evangelism 3

Christian Education... 3

Church History ..... 3

Scripture Memory ..... 2

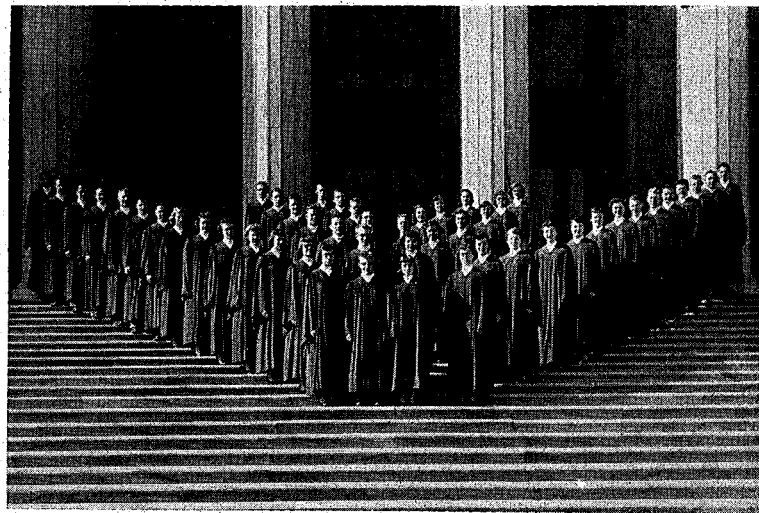
**General Education Subjects... ..12 credits**

English ..... 6

Music ..... 3

Speech ..... 3

**Electives .....30 credits**



**The Grace Chorale**

## THE THREE YEAR COURSE

(92 hours credit required for diploma)

" Study to show thyself approved unto God, a workman that needeth not to be ashamed, rightly dividing the word of truth." (2 Timothy 2:15)

### First Year

First Semester		Second Semester	
Course	Credit	Course	Credit
Bibl 111 O. T. Survey I.....	3	Bibl 112 N. T. Survey I .....	3
Bibl 121 Personal Evangelism....	3	C. Ed. 111 Christian Education ....	3
Eng 111 English I .....	3	Eng 112 English II .....	3
Mus 111 Basic Music .....	3	Spch 221 Speech .....	3
Electives .....	3	Electives .....	3
Orientation .....	0	Orientation .....	0

### Second Year

First Semester		Second Semester	
Course	Credit	Course	Credit
Bibl 211 N. T. Survey II.....	3	Bibl 212 O. T. Survey II .....	3
Theo 211 Theology I .....	3	Theo 212 Theology II .....	3
Bibl 300 Exposition I .....	3	Bibl 300 Exposition II .....	3
Electives .....	6	Electives .....	6

### Third Year

First Semester		Second Semester	
Course	Credit	Course	Credit
Bibl 400 Exposition III .....	3	Bibl 400 Exposition IV .....	3
Bibl 311 Analysis of Romans ....	3	Bibl 312 Analysis of Hebrews....	3
Hist 311 Church History .....	3	Theo 321 Prophecy .....	3
Bibl 401 Scripture Memory .....	2	Electives .....	6
Electives .....	6		

**Note:**—First year students may register only for 100 and 200 series subjects, second year students for 200 and 300 and third year students for 300 and 400 series.

## THE FOUR YEAR COURSE

### Purpose and Aim

The four year courses are designed for students who seriously wish to prepare themselves for life and for the Lord's service and who wish to meet the increased demands made upon them, in these last days. Local churches are calling for spiritual and better prepared pastors, church musicians and Sunday School teachers, mission boards are asking for better trained candidates; in order to be able to gain entrance into some foreign countries as a missionary, a degree is essential; Christian day schools and academies are seeking qualified teachers. Grace Bible Institute is seeking to meet these demands and endeavors to integrate sound educational preparation with a thorough knowledge of God's Word, His will, and His plan, giving the Christian worker the best possible preparation for his life work.

Essentially, the four year courses consist of a Bible major, a minor of the student's choice, and sufficient subjects of a general educational nature to meet the usual requirements in other institutions of college level in the state of Nebraska. The courses lead to several baccalaureate degrees, such as Bachelor of Arts (A. B.), Bachelor of Religious Education (B. R. E.), and Bachelor of Sacred Music (B. S. M.). Basic to each degree offered is the Bible major. As such the established aims and objectives of Grace Bible Institute differ from and are not in competition with liberal arts colleges which seek to train workers for other walks of life according to the majors offered.

### Choice of Degrees

While Bible is the only major offered, the student is encouraged to choose a minor as early in his program as possible, preferably even before enrolling for the first semester. According to the minor chosen, he will qualify for one of several degrees. These are:

#### A. Bachelor of Arts—(A. B.)

The bachelor of arts degree is granted for successful completion of requirements for the following courses:

##### 1. Missionary Course

The missionary course is designed to meet the requirements of mission boards for foreign missionary service. Besides the basic Bible and general education subjects, missionary and medical subjects are added. The importance of the latter cannot be over estimated. Every worker in the foreign field must know how to take care of his own health and care intelligently for the health of his fellow workers. He must be able to give first aid to the natives who suffer from diseases and mistreatment. Ladies who are interested in medical work are encouraged rather to take the five year Nurses Training Course.



## 2. Christian Education Course

Doors are open in this land and abroad for workers prepared to enter the field of Christian education. The course is designed particularly with those in mind who intend to make Sunday School teaching, Child evangelism, or home missions their chief work.

## 3. Theology Course

Cardinal tenets of Scriptural truths are prayerfully studied in order to prepare the student for a fruitful Christian ministry. In these current days of doubt and confusion it is most essential that a solid foundation of Biblical knowledge and Christian principles be laid in the embryonic heart and mind of the student.

## 4. Psychology and Philosophy Course

In these turbulent days it is important that principles underlying human behaviour be comprehended in order to be helpful to others, individually and collectively. This course is designed as a study which investigates the facts and principles of reality, and of human nature and Christian conduct.

### B. Bachelor of Religious Education—(B. R. E.)

The student who completes the Christian Education course mentioned above and desires to go on to a liberal arts college to major in another field for a second A.B. degree may prefer not to receive the bachelor of arts degree at Grace Bible Institute. Other students may desire to take more subjects related to their contemplated fields of service than is possible under the Bachelor of Arts program. These may qualify for the B.R.E. degree.

### C. Bachelor of Sacred Music—(B. S. M.)

Students who are seriously interested in music will find much to challenge them in this four year program of music. The usual requirements for the Bible major are fully met, a broad, general education background is included, and the time remaining is devoted to a thorough training in music, both theoretical and practical. Besides training in theory the student majors in some field of applied music, presenting a minimum of eight credits in that field, and giving a recital shortly prior to graduation. The course is designed to comply with recommendations for schools offering church music majors and will meet the needs of those desiring to serve the Lord in the field of sacred music.

### General Requirements for a Baccalaureate Degree (Four year course)

1. Completion of 126 hours credit with an equivalent number of grade points.
2. A minimum of one year in residence at Grace Bible Institute with not less than 30 hours credit.
3. Evidence of strong Christian character and soundness of doctrine.
4. Evidence of zeal and faithfulness in practical Christian work.

### Curricular Requirements for the Bachelor of Arts Degree

General Education Subjects.....46 credits

English .....	6
Music and Speech.....	6
Foreign Language .....	14
Science .....	8
Psych. and Philosophy	6
History and Sociology	6

<b>Biblical Subjects</b> .....	<b>50 credits</b>
Textual Bible .....	30
12 hrs. survey	
6 hrs. analysis	
12 hrs. exposition	
Theology .....	9
Christian Education....	3
Personal Evangelism....	3
Church History .....	3
Scripture Memory .....	2
<b>Minor</b> .....	<b>18 credits</b>
<b>Electives</b> .....	<b>12 credits</b>

**Curricular Requirements for the Bachelor of Religious Education Degree**

<b>General Education Subjects</b> .....	<b>40 credits</b>
English .....	6
Music and Speech.....	6
Foreign Language .....	8
Science .....	8
Psych. and Philosophy	6
History and Sociology..	6
<b>Biblical Subjects</b> .....	<b>50 credits</b>
(Same as for Bachelor of Arts)	
<b>Minor</b> .....	<b>24 credits</b>
<b>Electives</b> .....	<b>12 credits</b>

**Curricular Requirements for the Bachelor of Sacred Music Degree**

<b>General Education Subjects</b> .....	<b>26 credits</b>
English .....	6
Science .....	8
Psych. and Philosophy	6
History and Sociology	6
<b>Biblical Subjects</b> .....	<b>50 credits</b>
(Same as for Bachelor of Arts)	
<b>Music Subjects</b> .....	<b>48 credits</b>
Basic Music .....	3
Music Theory I-V.....	15
Conducting .....	3
Church Music Admin.	3
Music History I, II.....	6
Counterpoint .....	3
Composition .....	3
Applied Music .....	11
Recital .....	1
<b>Elective</b> .....	<b>2 credits</b>

**Note:**—The course schedules of the pages following need not be followed exactly. They merely indicate how a student may plan his curriculum with a minimum of conflict and in a recommended sequence. Meeting the requirements as outlined above qualifies for graduation.

## MISSIONARY COURSE

(126 hours credit required for the A. B. degree)

"Also I heard the voice of the Lord, saying, Whom shall I send, and who will go for us? Then said I, Here am I; send me." (Isaiah 6:8)

### First Year

First Semester		Second Semester	
Course	Credit	Course	Credit
Bibl 112 N. T. Survey I.....	3	Bibl 111 O. T. Survey I.....	3
C. Ed. 111 Christian Education ....	3	Bibl 121 Personal Evangelism....	3
Spch 221 Speech .....	3	Mus 111 Basic Music .....	3
Eng 111 English I .....	3	Eng 112 English II .....	3
Psy 111 General Psychology ....	3	Soc 212 Intro. to Sociology.....	3
Orientation, .....	0	Orientation .....	0

### Second Year

First Semester		Second Semester	
Course	Credit	Course	Credit
Bibl 212 O. T. Survey II .....	3	Bibl 211 N. T. Survey II.....	3
Theo 212 Theology II .....	3	Theo 211 Theology I .....	3
Grk 211 or Ger. 111.....	4	Grk 212 or Ger. 112 .....	4
Hist 311 Church History .....	3	Hist 212 Modern World History 3	3
Miss 211 Anatomy and Phys.....	3	Miss 212 Fund. of Medicine.....	3

### Third Year

First Semester		Second Semester	
Course	Credit	Course	Credit
Bibl 300 Exposition I .....	3	Bibl 300 Exposition II .....	3
Bibl 312 Analysis of Hebrews....	3	Bibl 311 Analysis of Romans....	3
Grk 311 or Ger. 211 .....	3	Grk 312 or Ger. 212 .....	3
Sci 121 Biology I .....	4	Sci 122 Biology II .....	4
Miss 311 Miss. Princ. & Prac. 3	3	Miss 312 Anthropology .....	3

### Fourth Year

First Semester		Second Semester	
Course	Credit	Course	Credit
Bibl 400 Exposition III .....	3	Bibl 400 Exposition IV .....	3
Theo 321 Prophecy .....	3	Phil 311 Intro. to Philosophy....	3
Spch 311 Homiletics I .....	3	C. Ed. 421 Audio Visual Aids....	3
Miss 321 History of Missions....	3	Phil 322 Non-Chr. Religions....	3
Bibl 401 Scripture Memory .....	2	Electives .....	3
Electives .....	3		

## CHRISTIAN EDUCATION COURSE

(126 hours credit required for the A. B. or B. R. E. degree)

"These were noble . . . in that they . . . searched the scriptures daily. Therefore many of them believed; also of honorable women . . . not a few." (Acts 17:11, 12)

### First Year

First Semester		Second Semester	
Course	Credit	Course	Credit
Bibl 112 N. T. Survey I.....	3	Bibl 111 O. T. Survey I.....	3
C. Ed. 111 Christian Education.....	3	Bibl 121 Personal Evangelism....	3
Spch 221 Speech .....	3	Mus 111 Basic Music .....	3
Eng 111 English I .....	3	Eng 112 English II .....	3
Psy 111 General Psychology.....	3	Soc 212 Intro. to Sociology.....	3
	Orientation .....		Orientation .....
	0		0

### Second Year

First Semester		Second Semester	
Course	Credit	Course	Credit
Bibl 212 O. T. Survey II .....	3	Bibl 211 N. T. Survey II.....	3
Theo 212 Theology II .....	3	Theo 211 Theology I .....	3
Hist 311 Church History .....	3	Hist 212 Modern World History	3
Grk 211 or Ger. 111 .....	4	Grk 212 or Ger. 112.....	4
C. Ed. 211 Chr. Ed. of Children I.3		C. Ed. 212 Chr. Ed. of Child II....	3

### Third Year

First Semester		Second Semester	
Course	Credit	Course	Credit
Bibl 300 Exposition I .....	3	Bibl 300 Exposition II .....	3
Bibl 312 Analysis of Hebrews....	3	Bibl 311 Analysis of Romans....	3
Grk 311 or Ger. 211 .....	3	Grk 312 or Ger. 212 .....	3
Sci 121 Biology I .....	4	Sci 122 Biology II .....	4
C. Ed. 311 Chr. Ed. of Youth.....	3	Psy 312 Child Psychology .....	3

### Fourth Year

First Semester		Second Semester	
Course	Credit	Course	Credit
Bibl 400 Exposition III .....	3	Bibl 400 Exposition IV .....	3
Theo 321 Prophecy .....	3	Phil 311 Intro. to Philosophy....	3
C. Ed. 411 Chr. Ed. Seminar.....	3	C. Ed. 412 Chr. Ed. of Adults....	3
C. Ed. 421 Audio Visual Aids.....	3	C. Ed. 422 Church Admin. ....	3
Bibl 401 Scripture Memory .....	2		Electives .....
	Electives .....		3
	3		

**Note:**—Candidates for the A. B. degree must complete two years of foreign language. Candidates for the B. R. E. degree may substitute other courses for the second year in a foreign language.

## THEOLOGY COURSE

(126 hours credit required for the A. B. degree)

"But we will give ourselves continually to prayer, and to the ministry of the Word . . . and the Word of God increased." (Acts 6:4,7) *pt*

### First Year

First Semester		Second Semester	
Course	Credit	Course	Credit
Bibl 112 N. T. Survey I.....	3	Bibl 111 O. T. Survey I.....	3
C. Ed. 111 Christian Education.....	3	Bibl 121 Personal Evangelism.....	3
Spch 221 Speech .....	3	Mus 111 Basic Music .....	3
Eng 111 English I .....	3	Eng 112 English II .....	3
Psy 111 General Psychology.....	3	Soc 212 Intro. to Sociology.....	3
		Orientation .....	0

### Second Year

First Semester		Second Semester	
Course	Credit	Course	Credit
Bibl 212 O. T. Survey II .....	3	Bibl 211 N. T. Survey II.....	3
Theo 212 Theology II .....	3	Theo 211 Theology I .....	3
Hist 211 Anc. & Med. History.....	3	Grk 311 Church History .....	3
Grk 211 Greek I .....	4	Grk 212 Greek II .....	4
Bibl 351 Hermeneutics .....	3	Bibl 221 Bible Introduction .....	3

### Third Year

First Semester		Second Semester	
Course	Credit	Course	Credit
Bibl 300 Exposition I .....	3	Bibl 300 Exposition II .....	3
Bibl 312 Analysis of Hebrews.....	3	Bibl 311 Analysis of Romans.....	3
Grk 311 Greek Exegesis I.....	3	Grk 312 Greek Exegesis II.....	3
Sci 121 Biology I .....	4	Sci 122 Biology II .....	4
Theo 311 Sys. Theology I.....	3	Theo 312 Sys. Theology II.....	3

### Fourth Year

First Semester		Second Semester	
Course	Credit	Course	Credit
Bibl 400 Exposition III .....	3	Bibl 400 Exposition IV .....	3
Theo 321 Prophecy .....	3	Phil 311 Intro. to Philosophy.....	3
Spch 311 Homiletics I .....	3	Spch 312 Homiletics II .....	3
Theo 411 Sys. Theology III.....	3	Theo 412 Sys. Theology Sem.....	3
Hist 411 Archaeology .....	3	C. Ed. 422 Church Admin. ....	3
Bibl 401 Scripture Memory .....	2		

## PSYCHOLOGY AND PHILOSOPHY COURSE

(126 hours credit required for the A. B. degree)

"The Lord giveth wisdom: out of his mouth cometh knowledge and understanding."  
(Proverbs 2:6)

First Year			
First Semester		Second Semester	
Course	Credit	Course	Credit
Bibl 112 N. T. Survey I.....	3	Bibl 111 O. T. Survey I.....	3
C. Ed. 111 Christian Education....	3	Bibl 121 Personal Evangelism....	3
Spch 221 Speech .....	3	Mus 111 Basic Music .....	3
Eng 111 English I .....	3	Eng 112 English II .....	3
Psy 111 General Psychology.....	3	Soc 212 Intro. to Sociology.....	3
Orientation .....	0	Orientation .....	0

Second Year			
First Semester		Second Semester	
Course	Credit	Course	Credit
Bibl 212 O. T. Survey II .....	3	Bibl 211 N. T. Survey II.....	3
Theo 212 Theology I .....	3	Theo 211 Theology I .....	3
Hist 211 Anc. & Med. History....	3	Hist 311 Church History .....	3
Grk 211 or Ger. 111.....	4	Grk 212 or Ger. 112.....	4
Phil 211 Logic .....	3	Phil 212 Ethics .....	3

Third Year			
First Semester		Second Semester	
Course	Credit	Course	Credit
Bibl 300 Exposition I .....	3	Bibl 300 Exposition II .....	3
Bibl 312 Analysis of Hebrews....	3	Bibl 311 Analysis of Romans....	3
Grk 311 or Ger. 211.....	3	Grk 312 or Ger. 212 .....	3
Sci 121 Biology I .....	4	Sci 122 Biology II .....	4
Theo 311 Sys. Theology I.....	3	Psy 312 Child Psychology .....	3

Fourth Year			
First Semester		Second Semester	
Course	Credit	Course	Credit
Bibl 400 Exposition III .....	3	Bibl 400 Exposition IV .....	3
Theo 321 Prophecy .....	3	Phil 311 Intro. to Philosophy....	3
Psy 411 Psych. of Christianity 3:	3	Phil 322 Non-Chr. Religions....	3
Spch 311 Homiletics I .....	3	Spch 312 Homiletics II .....	3
Bibl 401 Scripture Memory .....	2	Electives .....	3
Electives .....	3		

## SACRED MUSIC COURSE

(126 hours credit required for the B. S. M. degree)

"Let the word of Christ dwell in you richly in all wisdom; teaching and admonishing one another in psalms and hymns and spiritual songs, singing with grace in your hearts to the Lord." (Col. 3:16)

First Year					
First Semester			Second Semester		
Course		Credit	Course		Credit
Bibl	111 O. T. Survey I.....	3	Bibl	112 N. T. Survey I.....	3
Bibl	121 Personal Evangelism.....	3	C. Ed.	111 Christian Education ...	3
Mus	111 Basic Music .....	3	Mus	112 Music Theory I.....	3
Eng	111 English I .....	3	Eng	112 English II .....	3
Psy	111 General Psychology.....	3	Soc	212 Intro. to Sociology.....	3
Mus	101 Applied Music .....	1	Mus	102 Applied Music .....	1
	Orientation .....	0		Orientation .....	0

Second Year					
First Semester			Second Semester		
Course		Credit	Course		Credit
Bibl	211 N. T. Survey II.....	3	Bibl	212 O. T. Survey II .....	3
Theo	211 Theology I .....	3	Theo	212 Modern World .....	3
Hist	311 Church History .....	3	Hist	212 Modern World History 3	3
Mus	211 Music Theory II.....	3	Mus	212 Music Theory III .....	3
Mus	221 Conducting .....	3	Mus	222 Church Music Admin. 3	3
Mus	201 Applied Music .....	1	Mus	202 Applied Music .....	1

Third Year					
First Semester			Second Semester		
Course		Credit	Course		Credit
Bibl	300 Exposition I .....	3	Bibl	300 Exposition II .....	3
Sci	121 Biology I .....	4	Sci	122 Biology II .....	4
Mus	311 Music Theory IV.....	3	Mus	312 Music Theory V.....	3
Mus	321 Music History I.....	3	Mus	322 Music History II.....	3
Mus	301 Applied Music .....	2	Mus	302 Applied Music .....	2

Fourth Year					
First Semester			Second Semester		
Course		Credit	Course		Credit
Bibl	400 Exposition III .....	3	Bibl	400 Exposition IV .....	3
Bibl	311 Analysis of Romans.....	3	Bibl	312 Analysis of Hebrews....	3
Theo	321 Prophecy .....	3	Phil	311 Intro. to Philosophy....	3
Mus	411 Counterpoint .....	3	Mus	412 Composition .....	3
Mus	401 Applied Music .....	2	Mus	402 Applied Music .....	1
Bibl	401 Scripture Memory .....	2	Mus	422 Recital .....	1
	Elective .....	1		Elective .....	1

## THE FIVE YEAR COURSES

### Purpose and Aim

There are a few areas of service which require more preparation and maturity than can be provided in a four year curriculum. To make these available to students at Grace Bible Institute, the school will offer two five year courses beginning with the Fall of 1955. These courses lead to the Bachelor of Theology and Bachelor of Science degrees.

### The Pastors Course—Th. B. Degree

A considerable number of graduates of Grace Bible Institute have in the past entered upon pastoral service. Frequently the need for broader training or a desire for additional instruction has been voiced. The work of the ministry does demand broad and adequate preparation. To meet this need, at least in a measure, Grace Bible Institute offers work leading to the Bachelor of Theology degree. The prospective minister may either decide upon the five year program at the beginning of his third year or complete a four year course leading to the Bachelor of Arts degree and return for additional post graduate work. If Greek has been chosen as the foreign language and either the Theological course or the Psychology and Philosophy course has been followed, there should be no difficulty in meeting requirements in a year.

### General Requirements for the Bachelor of Theology Degree

1. Completion of 156 hours credit with an equivalent number of grade points.
2. A minimum of one year in residence at Grace Bible Institute with not less than 30 hours credit. Students who have previously attended Grace and have received a degree must present 30 hours residence credit and 30 grade points beyond those possessed at the time the earlier degree was granted.
3. Evidence of strong Christian character and soundness of doctrine.
4. Evidence of zeal and faithfulness in practical Christian work.

### Curricular Requirements for the Bachelor of Theology Degree

General Education requirements 46 credits  
(Same as Bachelor of Arts)

Biblical Subjects .....50 credits  
(Same as Bachelor of Arts)

Advanced Theology .....15 credits  
Advanced Greek .....6 credits  
Psychology and Philosophy .....15 credits  
Homiletics ..... 6 credits  
Miscellaneous .....18 credits



### The Nurses Course—B. S. Degree

A number of students have in the past completed a three or four year program at Grace Bible Institute and then attended a nurses training school for three years to become a registered nurse (R.N.), making a total of six to seven years spent in preparation.

Beginning this fall, Grace Bible Institute in cooperation with the Immanuel Hospital (Lutheran) in Omaha will make available a joint training program whereby in five years the student may complete requirements to become a registered nurse (R.N.) and receive the Bachelor of Science degree in nursing from Grace Bible Institute.

The student begins with a year of intensive preparation at Grace Bible Institute. The aim is to provide basic Bible instruction, a deepening of his spiritual life, and a missionary vision. During this period the student makes arrangements with the nurses training school for entering nurses training. Residence at the hospital begins the second year and continues through the third and fourth years. Contact with Grace Bible Institute is maintained during these years educationally by enrolling in a three hour class each semester, and spiritually by fellowship in the activities of the school and with its students. Finally, with nurses training completed, the student returns to Grace Bible Institute for a final year of intensive study. With credit given for nursing experience, the student qualifies for graduation and for the Bachelor of Science degree.

#### General Requirements for the Bachelor of Science Degree

1. Completion of 126 hours with an equivalent number of grade points.
2. Be a graduate nurse and complete a minimum of one year in residence at Grace Bible Institute with not less than 30 hours credit.
3. Evidence of strong Christian character and soundness of doctrine.
4. Evidence of zeal and faithfulness in practical Christian work.

#### Curricular Requirements for the Bachelor of Science Degree

##### General Education Subjects.....30 credits

English ..... 6  
Music and Speech..... 6  
Philosophy & Psych... 6  
History and Sociology 6  
Electives ..... 6

##### Biblical Subjects .....50 credits

(Same as Bachelor of Arts)

##### Nursing credit at Hospital.....46 credits

## PASTORS COURSE

(156 hours credit required for the Th. B. degree)

"Be thou diligent to know the state of thy flocks, and look well to thy herds."  
(Proverbs 27:23)

First Year					
First Semester		Credit	Second Semester		
Course			Course	Credit	
Bibl	112 N. T. Survey I.....	3	Bibl	111 O. T. Survey I.....	3
C. Ed.	111 Christian Education.....	3	Bibl	121 Personal Evangelism.....	3
Spch	221 Speech .....	3	Mus	111 Basic Music .....	3
Eng	111 English I .....	3	Eng	112 English II .....	3
Psy	111 General Psychology.....	3	Soc	212 Intro. to Sociology.....	3
	Orientation .....	0		Orientation .....	0

Second Year					
First Semester		Credit	Second Semester		
Course			Course	Credit	
Bibl	212 O. T. Survey II .....	3	Bibl	211 N. T. Survey II.....	3
Theo	212 Theology II .....	3	Theo	211 Theology I .....	3
Grk	211 Greek I .....	4	Grk	212 Greek II .....	4
Hist	212 Anc. & Med. History.....	3	Hist	311 Church History .....	3
Phil	211 Logic .....	3	Phil	212 Ethics .....	3

Third Year					
First Semester		Credit	Second Semester		
Course			Course	Credit	
Bibl	312 Analysis of Hebrews.....	3	Bibl	311 Analysis of Romans.....	3
Grk	311 Greek Exegesis I.....	3	Grk	312 Greek Exegesis II.....	3
Sci	121 Biology I .....	4	Sci	122 Biology II .....	4
Theo	311 Sys. Theology I.....	3	Theo	312 Sys. Theology II.....	3
C. Ed.	421 Audio Visual Aids.....	3	Psy	312 Child Psychology .....	3

Fourth Year					
First Semester		Credit	Second Semester		
Course			Course	Credit	
Bibl	300 Exposition I .....	3	Bibl	300 Exposition II .....	3
Theo	321 Prophecy .....	3	Phil	311 Intro. to Philosophy.....	3
Spch	311 Homiletics I .....	3	Spch	312 Homiletics II .....	3
Theo	411 Sys. Theology III.....	3	Theo	412 Sys. Theology Sem.....	3
Grk	411 Greek Exegesis III.....	3	Grk	412 Greek Exegesis IV.....	3

Fifth Year					
First Semester		Credit	Second Semester		
Course			Course	Credit	
Bibl	400 Exposition III .....	3	Bibl	400 Exposition IV .....	3
Hist	411 Archaeology .....	3	C. Ed.	422 Church Admin. ....	3
Bibl	351 Hermeneutics .....	3	Bibl	221 Bible Introduction.....	3
Theo	511 Pastoral Methods .....	3	Theo	512 Pastoral Counseling .....	3
Psy	411 Psych. of Christianity 3		Phil	322 Non-Chr. Religions .....	3
Bibl	401 Scripture Memory .....	2			

## NURSES TRAINING COURSE

(126 hours credit for the B. S. degree)

"... and healing all manner of sickness and all manner of diseases among the people." (Matthew 4:23b)

### First Year

First Semester		Credit	Second Semester		Credit
Bibl	112 N. T. Survey I .....	3	Bibl	111 O. T. Survey I .....	3
C. Ed.	111 Christian Education....	3	Bibl	121 Personal Evangelism....	3
Spch	221 Speech .....	3	Mus	111 Basic Music .....	3
Eng	111 English I .....	3	Eng	112 English II .....	3
Psy	111 General Psychology ....	3	Soc	212 Intro. to Sociology.....	3
	Orientation .....	0		Orientation .....	0

### Second Year

(At Immanuel Hospital)

First Semester		Credit	Second Semester		Credit
Bibl	311 Analysis of Romans....	3	Bibl	312 Analysis of Hebrews....	3

### Third Year

(At Immanuel Hospital)

First Semester		Credit	Second Semester		Credit
Bibl	300 Exposition I .....	3	Bibl	300 Exposition II .....	3

### Fourth Year

(At Immanuel Hospital)

First Semester		Credit	Second Semester		Credit
Bibl	400 Exposition III .....	3	Bibl	400 Exposition IV .....	3

### Fifth Year

First Semester		Credit	Second Semester		Credit
Bibl	212 O. T. Survey II.....	3	Bibl	211 N. T. Survey II .....	3
Theo	212 Theology II .....	3	Theo	211 Theology I .....	3
Hist	212 Anc. & Med. History....	3	Hist	311 Church History .....	3
Theo	321 Prophecy .....	3	Phil	311 Intro. to Philosophy....	3
Bibl	401 Scripture Memory .....	2		Electives .....	3
	Electives .....	3			

# DESCRIPTION OF COURSES

## DEPARTMENT OF BIBLE

### Textual Bible Subjects

#### **111 Old Testament Survey I - Genesis to Esther**

A survey of the Bible enables the student to obtain a broad view of the contents of each book. It involves the reading of the book, its study with the aid of a helpful outline and hand-book, and special attention at important or difficult points. The survey covers the main historical portion of the Old Testament from the time of creation to the restoration from captivity. 3 hours.

#### **112 New Testament Survey I - Matthew to Romans**

This survey includes the life of Christ, the origin and growth of the early church, and the basic teachings concerning the way of salvation. Besides a brief consideration of the historical events, special emphasis is laid on the doctrinal and dispensational teachings within these books. 3 hours.

#### **211 New Testament Survey II - Corinthians to Revelation**

Continuation of course 112 with emphasis upon thorough knowledge of the contents and teachings of the Epistles. The historical back-ground and doctrinal importance of each book is carefully considered. 3 hours.

#### **212 Old Testament Survey II - Job to Malachi**

A continuation of course 111 with emphasis upon the poetic and prophetic books of the Old Testament. 3 hours.

#### **311 Analysis of Romans**

An analytical, verse by verse, study of the book of Romans by the student under the guidance of the instructor. In Romans the plan of salvation by grace through faith is clearly set forth in its justifying influence upon the believer—often a marvelous discovery to young Christians. 3 hours.

#### **312 Analysis of Hebrews**

A continuance of the analytical method of study applied to the book of Hebrews. The superiority of the new covenant over the old, of the new Mediator instead of the old, is presented in such a way as to lead the student into a deeper and closer fellowship with his Lord. 3 hours.

#### **321 Exposition of Acts**

The Apostolic Christian Church was truly Spirit-filled and Spirit-led, and we do well to study its life and growth and emulate its example. Luke's Spirit-inspired history of this period is studied with special stress upon the motivation, men, and methods used in missionary activity. Portions are assigned for written or oral exposition. 3 hours.

#### **322 Exposition of Corinthians**

This is Paul's great treatise on the proper order in church services, and on consistent Christian living—both matters of practical importance in any age. Original expository outlines on assigned portions are prepared and presented orally or in written form. 3 hours.

**331 Exposition of Galatians and James**

The error, that we are saved by grace but sanctified through keeping of the law, is prevalent even today. Paul's strenuous defense of pure grace and Christian liberty is worthy of careful study. James presents the practical aspect of these great truths. Methods of study include a careful examination of the sacred text and the presentation of written and oral expositions. 3 hours.

**332 Exposition of the Prison Epistles**

This course includes a study of Ephesians, Phillipians and Colossians. These books emphasize the Church as the body and bride of Christ and present Christ as the model, example, and only sufficient and supreme source of truth and life. Written or oral expositions, incorporating original outlines, are required. 3 hours.

**341 Exposition of the Thessalonian and Pastoral Epistles**

Christian living, the resurrection of the believer, and the Rapture are themes which never lose their interest to serious students of the Word. The Pastoral Epistles present God's will for the organization and discipline of the New Testament Church. Written or oral presentation of original expository outlines and comments are required. 3 hours.

**342 Exposition of the Petrine and Johannine Epistles**

This course includes a study of the epistles of Peter and John and their words of comfort, courage, warning, inspiration and exhortation to a deeper love for Christ. Written or oral expositions, incorporating original outlines and word studies, are required. 3 hours.

**411 Exposition of Exodus and Leviticus**

The God-ordained sacrifices required of Israel and the tabernacle are richly typical of Christ's sacrifice of Himself for man's sin. Through a study of these books, the student is given a key which will unlock the treasures of other Old Testament typology. Written expositions of limited portions are required. 3 hours.

**412 Exposition of Ezra, Nehemiah and Esther**

The post-captivity books project a plan and straightforward account of the most important events in Jewish history, the return of the Jews from the Babylonian captivity. Written expositions and research are required. 3 hours.

**421 Exposition of Job**

The dramatic story of Job appeals to many hearts. It is an inspired answer to the age-old problem of suffering. Although an ancient book, it comes alive to the contemporary scene. In its pages the student finds occasion to engage in expositional study based upon the deeper philosophical and theological issues involved, the action-packed unfolding of the "divine entanglement," and a consideration of the patience of one of God's choicest saints. For this purpose, panel discussions and written expositions are presented. 3 hours.

**422 Exposition of Psalms**

As models of acceptable devotion and ethical expression, the Psalms run the gamut of human experience in relation to a holy God. Thus their message is timeless and universally applicable. They are grouped and studied as follows: Theocratic Psalms, Nature, Reflection, Penitential, Historical, Problem, Messianic. Written and oral presentation of original expository outlines and comments are required. 3 hours.

**431 Exposition of Isaiah**

The inspired author of this book is sometimes called "the Messianic Prophet" because he "saw the glory of Christ, and spoke of Him." Besides this, Isaiah abounds in timeless spiritual truth, and its still unfulfilled prophecy strongly supports the premillennial point of view. Written or oral expositions are required. 3 hours.

**432 Exposition of Ezekiel**

A vision of God's majestic power and glory gives us, through this prophet, the assurance that world affairs are still in His hand; that "man proposes, but God disposes." Of particular interest in our times are Ezekiel's prophecies concerning the Jew, some of which are being fulfilled before our eyes. Written or oral expositions after thorough research are required. 3 hours.

**441 Exposition of Daniel**

A detailed study of the book of Daniel is made, emphasizing the historical background to the times of the Gentiles, God's prophetic program for Israel, and the practical lessons from the life of Daniel. Portions are assigned for individual study and original expositions are required. 3 hours.

**442 Exposition of Zechariah and Malachi**

After orientation into exilic and post-exilic history of Israel, the student is guided in a sane interpretation of the highly symbolic book of Zechariah, and learns to appreciate its Messianic predictions, as well as its predictions concerning the Millennial Age. In Malachi the student makes a study of the unfaithfulness of Israel and draws many applications for our present time. Portions are assigned for individual research and written or oral expositions. 3 hours.

**Related Bible Subjects**

**121 Personal Evangelism**

Methods of doing personal work, of dealing with excuses and difficulties, and of strengthening new converts in the faith are discussed. The course includes a study of the history, beliefs, and practices of current religious cults and how to deal with them. Emphasis is placed on Scripture memory and a practical knowledge of the Word. 3 hours.

**221 Bible Introduction**

A course in which the natural history of the Bible is traced from the ancient, original manuscripts to the present day translations. A study of Biblical writing methods and materials, inspiration, canonicity, genuineness, authenticity, Pseudepigrapha, Apocrypha, and an evaluation of modern versions. 3 hours.

**222 Bible Geography**

A knowledge of the geography of the Bible and of Biblical customs is essential for a correct understanding of the Bible. Maps are produced by the student, and the life and journeys of Bible characters are traced on these. 3 hours

**351 Hermeneutics**

The fundamental principles of interpretation are studied as a basis for a correct understanding, proper handling, and sane exegesis of the Holy Scriptures. It is essential that students distinguish between the things that differ in God's Word. 3 hours.

**401 Scripture Memory Work**

All students at the time of graduation are required to give evidence that they are able correctly to quote and give references of 300 Bible verses. This requirement keeps before the students the value of storing the Scriptures in their hearts and minds, and of being able to recall and use these with "success" in Christian work. (Joshua 1:8). 2 hours. (Payment of tuition fee required).

**DEPARTMENT OF CHRISTIAN EDUCATION**

**111 Christian Education**

A study of the history, development, organization, curriculum and evangelism of the Sunday School; a study of recognized principles and methods of teaching; a brief survey of aims, organization, administration, and materials to be used in Vacation Bible schools. 3 hours.

**211-212 Christian Education of Children I, II**

A study of the child's characteristics, problems, needs; material and methods for children's work including Bible study, worship, evangelism, missionary education, music, story-telling, and practice teaching. The use and evaluation of visual aids: maps, charts, flannelgraph, pictures, object lessons, etc. 3 hours.

**311 Christian Education of Youth**

A study of the nature, interests, needs, objectives, methods, organization, leadership, and materials for adequate Christian training of youth. 3 hours.

**411 Christian Education Seminar**

A study of theory and practice of educational systems from early civilization to the present time; an evaluation of current trends in religious education; a comprehensive survey of the field of Christian education and a study of major problems related to this field. 3 hours.

**412 Christian Education of Adults**

Basic needs, interests, and problems of adult life; materials, methods, counselling, and practice teaching; organization, administration, and supervision of adult education; a study of Amos by the inductive method. 3 hours.

**421 Audio-Visual Aids**

Basic principles of photography including the principles and operation of various types of cameras, developing, printing, and enlarging; training in slide projection, motion picture projection, tape recording, and the use of other audio-visual equipment; a survey of materials useful for teaching and in missionary work. 3 hours.

**422 Church Administration**

This study brings to the student's attention the practical problems of a pastor's call, his service and duties, and his relation to the church and the community. The subject is of unusual value to those entering the ministry. 3 hours.

**DEPARTMENT OF COMMERCIAL ARTS**

**111-112 Typing I, II**

Control of the keyboard is mastered. Both accuracy and speed of typing are emphasized through speed tests and practical problems as typing sentences, paragraphs, and letters. In the second semester, speed is increased and more difficult projects are typed. 3 hours each semester.

**121-122 Shorthand I, II**

A study of the fundamentals of the Gregg system; practice in reading shorthand and taking dictation; beginning transcription. 3 hours each semester.

**221-222 Bookkeeping I, II**

A study of the elementary fundamentals of bookkeeping. It is most essential that Christian workers be honest and accurate in their financial dealings with others, and to that end careful record keeping is important. 3 hours each semester.

**DEPARTMENT OF ENGLISH AND SPEECH**

**011-012 English Grammar, I, II**

Students who have not completed high school or who fall low in their entrance examinations will be asked to take this course in English Grammar which is on the high school level. Emphasis is on parts of speech and sentence structure. No credit.

**021 Reading Improvement**

A course designed for students who desire to improve their reading skill. No credit.

**111-112 English I, II**

Thorough review of grammar. A study of the varieties of sentence structure, punctuation, paragraph construction, written description and expository composition. Second semester, advanced composition. This is a college level course. 3 hours each semester.

**211 English Literature**

A brief survey of the major contributions to English literature by outstanding English writers. 3 hours.

**212 American Literature**

A survey of the major contributions to American literature by outstanding American writers. 3 hours.

**221 Speech**

The fundamentals of oral expression as applied to public reading of the scriptures, teaching, and the delivery of themes, devotionals, and gospel messages. The course emphasizes personal appearance, proper posture, correct breathing, articulation, and phrasing; aims to give the student an elementary knowledge of homiletics, and supplies practical experience through brief extempore speeches. 3 hours.



**311-312 Homiletics I, II**

The course covers the preparation and delivery of Gospel messages, themes and sermons, and as such is adapted especially to men students. Emphasis is laid on the exposition of the Word. Pastoral problems, such as visitation, finance, church ordinances, weddings, funerals, transacting church business, are studied. Practice preaching constitutes a major part of the course. 3 hours each semester.

**DEPARTMENT OF LANGUAGE**

**Greek**

**211-212 Greek I, II**

A study devoted to the mastery of the rudiments of the language and the acquisition of the vocabulary. During the latter part of the second semester the Epistles of John are translated. Prerequisite: English II, or equivalent. 4 hours each semester.

**311-312 Greek Exegesis I, II**

The study of Greek grammar and syntax is continued in connection with careful translation of the Gospel of John followed by a study in the practical use of the Greek New Testament. 3 hours each semester.

**411-412 Greek Exegesis III, IV**

An advanced course in Greek grammar and the exegesis of various epistles. Writing of several Greek exegetical papers is required to acquaint the student with and gain experience in the use of commentaries based on the Greek text. 3 hours each semester.

**German**

**111-112 German**

Pronunciation; essentials of grammar; composition and conversation. Reading of graded texts. Collateral reading with reports during the second term. 4 hours each semester.

**DEPARTMENT OF MISSIONS**

**211 Anatomy and Physiology**

Ignorance of the elementary physiological facts, such as presented in this brief but comprehensive course, may greatly impair the missionary's usefulness or even imperil his life. Included is the standard Red Cross course in first aid. 3 hours.

**212 Fundamentals of Medicine I, II**

A lecture, study, and laboratory course covering such branches of medicine as diagnosis, dentistry, minor surgery, eye diseases, obstetrics, tropical diseases and communicable diseases presented by a competent, Christian physician. 3 hours.

**311 Missionary Principles and Practice**

A course of instruction designed to prepare the prospective missionary for meeting the peculiar conditions and problems of life and service awaiting him in a strange land or community. Discussion and evaluation of the problems of the missionary. 3 hours.

**312 Anthropology**

A study of man and his culture from the standpoint of the missionary. Survey of the languages, religions, beliefs, and social organizations of primitive people. 3 hours.

**321 History of Missions**

The history and progress of world wide missions from Apostolic days to the present are carefully studied, the needs of the various mission fields presented and the duties of the believer pointed out. During the latter part of the semester a study will be made of modern missions and mission societies. The survey will include Mennonite missions. 3 hours.

**322 Phonetics**

The aim of this course is to aid the prospective missionary in the acquiring of foreign languages and to present methods of translating foreign languages and principles of reducing new tongues to writing. 3 hours.

**DEPARTMENT OF MUSIC**

**111 Basic Music**

A musical survey, including fundamentals of notation, sight reading, and elementary conducting. 3 hours.

**112 Music Theory I**

An introduction to four-part harmonic writing, including a study of diatonic triads in fundamental form and first inversion; ear training and sight singing. Prerequisite: Music 111 or permission of instructor. 3 hours.

**211-212 Music Theory II, III**

A continuation of the study of harmonic materials and procedures and the art of good part-writing: inversions, progression, cadence, figured bass, dominant seventh and ninth chords; harmonic analysis; ear-training and sight singing. Prerequisite: Music 112. 3 hours each semester.

**221 Conducting**

A comprehensive study of conducting principles and practice, with attention to vocal and instrumental interpretation. Hymns, anthems, and a standard oratorio are analyzed and conducted. Recordings are used, and the class is organized into a practice choir. 3 hours.

**222 Church Music Administration**

A study of methods and materials in the organization and operation of music in the various functions of the church. The multiple-choir system, the relation of the pastor and music committee to the music program, materials and repertoire; these and other matters relative to the ministry of worship and evangelism are analyzed. 3 hours.

**311-312 Music Theory IV, V**

Advanced harmony: a study of secondary seventh and ninth chords, modulation, chromatic and modern harmony; analysis; advanced dictation and sight singing. A survey of strict counterpoint in the five species; two and three-part writing. Prerequisite: Music 212. 3 hours each semester.

**321-322 Music History I, II**

Survey of music from ancient civilizations to the present. Includes study of the influence of various schools of music on both sacred and secular composition, development of instruments, various forms of music from Early, Medieval, Renaissance, Baroque, Classical, Romantic, and Modern periods. Representative works of each period are sung or played, or heard on recordings. 3 hours each semester.

**411 Counterpoint**

Three and four-part contrapuntal writing, strict and free; invertible counterpoint, imitation, canon and fugue; analysis. Prerequisite: Music 312. 3 hours.

**412 Composition**

Original writing in smaller homophonic forms of instrumental and vocal composition; analysis and study of homophonic form. Prerequisite: Music 411. 3 hours.

**101-402 Applied Music**

A Music Course graduate must present 11 semester hours in applied music and one hour in senior recital for graduation. Of these, 8 hours must be in his major field. All applied music students are required to attend the frequent student practice recitals.

Lesson fees, as stated under "Financial Information," are in addition to the tuition fee. A minimum of 14 lessons per semester is required for credit.

**Voice**

Voice building and strengthening through proper breath control and tone placement. Technical vocalises and a balanced repertoire of art songs, hymns and gospel songs are studied, with an emphasis on interpretation and platform poise. 1 hour.

**Piano**

Major and minor scales, parallel and contrary motion, at varying tempos. Major, minor, and seventh chords and arpeggios in all positions. Foundation technical studies and representative classical compositions of each period. Congregation playing with hymn transposition and improvisation. Accompaniments of vocal solo and choral groups. 1 hour.

**Organ**

It is recommended that only those enroll for organ who have sufficient piano technique equivalent to sonatas of Haydn, Mozart, or Beethoven. Emphasis is upon the training of the church organist. Hymn playing and the finest of organ literature are studied. 1 hour.

**Instrumental**

Instruction in the playing of all standard orchestral and band instruments is available. Technique, tone, and repertoire are stressed, with special attention to practical Christian use. 1 hour.

**422 Recital**

Each music course graduate is required to give a Senior Recital in his major applied field, except where an alternative thesis is recommended. These recitals are open to the public and present a balanced repertoire of the various periods of composition, both secular and sacred. 1 hour.

**121-422 Grace Chorale**

A mixed choir selected by audition at the beginning of the first semester to be trained in the interpretation of all worthy forms of sacred music. Several public appearances are made during the year, including an annual spring concert hour. 1 hour each semester.

**131-432 Chorus**

A mixed choir open to all students for training in ensemble singing. A variety of sacred music is studied, including a major oratorio to be presented in the spring with the Chorale. 1 hour each semester.

**141-442 Band**

Open to those who play band instruments, giving them an opportunity to gain instruction and experience in ensemble playing. The band plays at several public services throughout the year. 1 hour each semester.

**151-452 String Ensemble**

An ensemble course for those who play violin, viola, cello or string bass. Out of this group are formed such ensembles as string quartet, trios, and duets. It also serves as a nucleus for a small chamber orchestra. 1 hour each semester.

**DEPARTMENT OF PSYCHOLOGY AND PHILOSOPHY**

**Psychology**

**111 General Psychology**

This is the study of the principles underlying human behavior, designed to help the student to get a better knowledge of himself and of other people. Such knowledge is necessary in order to live our lives effectively for God and for others. 3 hours.

**312 Child Psychology**

This course deals with the development of children from infancy to adolescence. This study is important because during the plastic period of childhood the foundation is laid for the adult life of the person. In order to work effectively with children we must understand their problems and needs. 3 hours.

**411 Psychology of Christianity**

In this study the facts and principles of psychology are applied especially to Christian living. Emphasis is put upon the methods which are used in winning others and in influencing them toward a fuller and more fruitful Christian life. 3 hours.

**Philosophy**

**211 Logic**

This is a study of the principles of reasoning, both deductive and inductive, with special emphasis on the practical applications of the science. 3 hours.

**212 Ethics**

A study of the fundamental principles underlying character and moral conduct, with particular reference to the Christian faith as furnishing the only real and adequate basis for righteous living. 3 hours.

**311 Introduction to Philosophy**

A study of the Christian faith in its bearing upon the fundamental problems of life. It is designed especially to establish the student more firmly in his faith by showing him that the Christian faith has the only real and adequate answer to these problems. 3 hours.

**322 Non-Christian Religions**

Background description of pagan religions met on various mission fields will be given. The prevalence of unscriptural religious sects in our country today, many of which may be traced to oriental influences, makes a study of this subject highly desirable for any Christian worker. 3 hours.

**DEPARTMENT OF SCIENCE**

**Physical Science**

**111 Physics**

A survey of astronomy and physics with emphasis upon the latter. A two-hour laboratory period each week supplements theory with a practical working knowledge of the subject matter. 4 hours.

**112 Chemistry**

A survey of chemistry and geology with special emphasis upon the former. A two-hour laboratory period each week is a part of the course. 4 hours.

**Biological Science**

**121-122 Biology I, II**

A survey of the natural life processes of plants and animals. Lecture, discussion and two-hour laboratory periods weekly. 4 hours each semester.

**DEPARTMENT OF SOCIAL SCIENCE**

**History**

**211 Ancient and Medieval History**

A survey of ancient and medieval history. Emphasis will be placed upon the unfolding of world history in its manifold and connected aspects of culture, economics, politics, and the arts. 3 hours.

**212 Modern World History**

A survey of modern history emphasizing social, cultural, political and economic developments to the present. This course is designed to help the student orient himself more intelligently in church history and the recent developments of the missionary movement. 3 hours.

**311 Church History**

An extensive and thorough course tracing the history of the church down to recent times. Ancient, Medieval, and Modern church history is covered and special attention given to the great historical movements that affected the Church. 3 hours.

**411 Archaeology**

Advanced students will find much additional confirmation as well as illumination in a survey of the field of Biblical archaeology. More new material is appearing here than in any other area of Biblical studies. A study of recent discoveries in Palestine, Babylonia, Egypt and Assyria is included in the course. 3 hours.

**Sociology**

**212 Introduction to Sociology**

A basic course dealing with the theories and explanation of factors influencing group life. Study of social relations, social forces, and social institutions. The endeavor is made to help the student develop a consistent ethical and Christian outlook upon society. 3 hours.

## DEPARTMENT OF THEOLOGY

### 211-212 Theology I, II

The great doctrines of the Christian faith are studied in the light of the testimony of the Scriptures. The doctrines of God, Christ, the Holy Spirit, Man, Sin, Salvation, etc., are studied. This equips the student with a general grasp of the teachings of the Bible upon all major themes. 3 hours each semester.

### 311 Systematic Theology I

Advanced students are in a position to undertake further systematic and comparative doctrinal studies to gain greater clarity in their own thinking, enabling them to distinguish the Scriptural from the unscriptural in the various theological systems with keen discernment. This study will cover Bibleology, Theology proper and anthropology. 3 hours.

### 312 Systematic Theology II

The important fields of Redemptive need and provision will be analyzed as Hamartiology, Christology, and Soteriology are considered. 3 hours.

### 321 Prophecy

A comprehensive study of the prophecies concerning the first and second advents of Christ, the Jews, the land of Palestine, the end-time, and other important prophetic truths and their relation to the Christian's present day life. 3 hours.

### 411 Systematic Theology III

A study of Ecclesiology and Eschatology will be offered. The former will be analyzed in view of the Biblical covenants and dispensations and the latter in view of the contemporaneous systems as well as Biblical theocracy. 3 hours.

### 412 Systematic Theology Seminar

A historical study of the doctrines held by the church at various periods in its history, of the great controversies that have been waged from time to time, and of the heroes of the Faith who uncompromisingly have stood true to God and His Word. Directed individual research in the field of Theology. Theses. Prerequisite: 6 hours in Systematic Theology. 3 hours.

### 511 Pastoral Methods

A study of the pastor's records, accounts, filing system, etc., with emphasis upon the practical aspects of the minister's varied duties.

### 512 Pastoral Counseling

A study of how pastors and Christian leaders may analyse and give counsel to those with emotional, economic, social and religious problems. 3 hours.

## STUDENT ACTIVITIES

### Devotional Life

The Institute considers the devotional life of the student a very important part of his training. An early morning quiet hour is daily set aside for the student's own personal devotional life. Further, each class day there is set aside a twenty minute devotional and testimonial period in which both students and faculty take part. A portion of this time is also used daily to praise the Lord in song. Students themselves sponsor additional prayer meetings in which smaller groups remember special needs. All students are encouraged to schedule special prayer periods.

### Student Body Association

The Student Body Association (S. B. A.) is an organization comprising the entire student body and exists for the purpose of fostering a spirit of fellowship, of promoting the welfare of the students, and of directing student affairs. Every other Thursday morning the Student Body Council is in charge of the chapel period. The Student Body Council is in charge of arranging all the student activities of the school.

### Macedonian Missionary Fellowship

In order that the missionary spirit of the school may be kept stimulated and fresh, a missionary society called the "Macedonian Missionary Fellowship" (M.M.F.) was organized by the Student Body Association. This organization has charge of alternate Thursday chapel periods. The students also gather every Friday during this devotional period for a season of prayer in which the needs of the various fields and missionaries individually are remembered. The students have divided themselves into twelve groups known as prayer bands, each praying for some specific field such as China, Africa, India, South America, or home needs. This period of prayer on Friday is followed by the Missions Hour in which, whenever possible, a missionary in a soul-stirring way presents the needs of his field.

### "Student Streamers"

The Student Body Association sponsors a weekly mimeographed publication known as the "Student Streamers." It serves as a record of school activities, brings items of interest to the students, and offers a channel through which students may develop their writing talents. An editorial staff is elected by the Student Body Association. Valuable training in journalism is thus afforded under the supervision of the English department of the school.

### "Free Nights"

Friday evenings have been set aside as free nights, when students gather for an evening of relaxation and fellowship in a home-like atmosphere. A special committee, appointed by the student Body Council, plans the programs for these evenings. The singspirations, the testimonial periods, the recreational games, as well as occasional refreshments long remain in the memory of the student as a blessed time of fellowship with others who love the Lord.

### Semi-annual Picnics

As the Institute believes in a well-balanced life in which recreation has a part, the Student Body Association each fall and spring sponsors a school picnic. One of the many large parks of Omaha is chosen for the site and a day is spent in God's great open out-of-doors. An



appetizing meal climaxes the strenuous activities of the outing, and students and faculty alike return to their work refreshed in mind and body. While the Institute is in sympathy with good physical recreation, it is not in favor of competitive athletics with other schools.

#### **Gospel Teams**

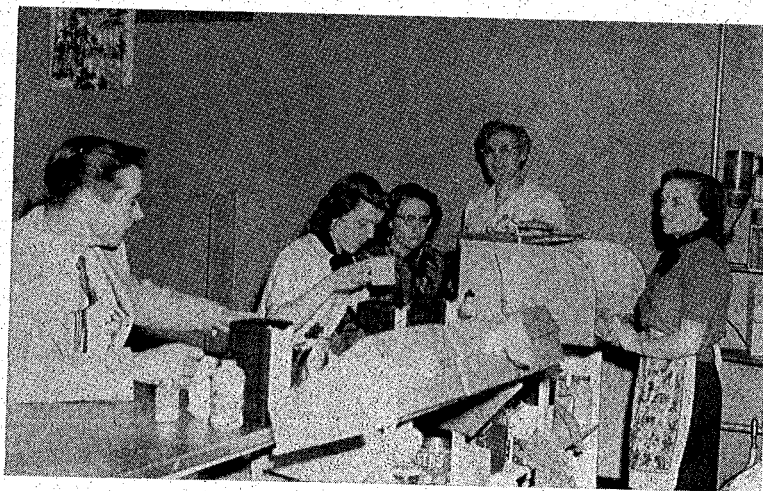
Quartets, trios and other groups have the opportunity to organize Gospel Teams, and as a group to witness for Christ. Opportunities to testify in Omaha and vicinity, as well as on week-end or extended vacation tours are arranged through the practical work department and the extension department of the school. Among the numerous teams may be mentioned the jail teams, hospital teams, street meeting groups, city-mission workers, and other smaller groups engaged in child evangelism, house visitation, etc.

#### **Prayer Room**

As in most cases two students occupy one room, a special room has been equipped and furnished by the senior class of 1946 and is set aside as a prayer room. Here students may alone unburden their hearts to God, commune with Him, and seek His guidance, Christ often sought to be alone with God; we too may hear His voice and learn His will as we pause in His presence.

#### **Faculty Cooperation**

Faculty sponsors are annually appointed to act as advisers to the Student Body Association, the Macedonian Missionary Fellowship, the senior class, the junior class, the "Student Streamers," the "Charis" staff, the Singspiration committee, and the social committee. This cooperation of the faculty with the students in their activities is mutually beneficial and ties the two together in a bond of Christian fellowship.



**The Snack Shop**



## STUDENT REGISTER

1954-1955  
Graduates

32	Auckland, David	Arkport, New York
31	Bartsch, Fern	Delft, Minnesota
22	Buller, Charles	Bloomfield, Montana
25	Buller, Mrs. Charles	Bloomfield, Montana
31	Christensen, Joyce	Oakland, Iowa
33	Classen, Arlene	Meade, Kansas
31	Classen, Esther	Meade, Kansas
30	Counts, Stanley	Kansas City, Missouri
33	Crowel, Kenneth	Bremen, Indiana
30	Decker, Roscoe	Meno, Oklahoma
35	Dick, Leanna	Hampton, Nebraska
15	Ensz, Lloyd	Marion, South Dakota
32	Entz, Eleanore	Whitewater, Kansas
33	Epp, Phebe	Whitewater, Kansas
33	Friesen, Virginia	Steinbach, Manitoba, Canada
24	Giesbrecht, Alvin	Winnipeg, Manitoba, Canada
29	Gravett, Charlotte	Wessington, South Dakota
30	Hanson, Raymond	Concord, Nebraska
34	Harriger, William	Broken Bow, Nebraska
30	Heinrichs, Ruby	Dinuba, California
31	Hiebert, Elda	Elbing, Kansas
34	Hochstettler, June	Bluffton, Ohio
33	Holzworth, Emery	Glendive, Montana
26	Ingersoll, Mary	Unionville, Missouri
33	Kaufman, Reitha	Peabody, Kansas
31	King, Ina	Kingston, Arkansas
33	Klaassen, Glendon	Mountain Lake, Minnesota
25	Loewen, Menno	Meade, Kansas
34	Lohrenz, Donna	Orienta, Oklahoma
34	Lohrenz, Wanda	Orienta, Oklahoma
34	Lorenz, Gordon	O'Neill, Nebraska
31	Lyon, Mary	Giltner, Nebraska
34	McKay, Laura	Lucerne, Missouri
33	Ortmann, Albert	Munich, North Dakota
11	Pauls, Susie	Hutchinson, Kansas
33	Penner, Lila	Mountain Lake, Minnesota
32	Porter, Sophia	Bassett, Nebraska
30	Regier, Ernest	Swift Current, Saskatchewan, Canada
27	Sallaska, Charles	Fairview, Oklahoma
28	Schmidt, Wilma	Waldheim, Saskatchewan, Canada
33	Schultz, Roscoe	Omaha, Nebraska
33	Searles, Irene	O'Neill, Nebraska
33	Seibel, Darlene	McClusky, North Dakota
34	Stover, Annabelle	Bluffton, Ohio
28	Suderman, Robert	Newton, Kansas
33	Thiessen, Gerald	Meade, Kansas
31	Timnick, Victor	Plainview, Nebraska
32	Unruh, Elsie	Warroad, Minnesota
31	Unruh, Florence	Delft, Minnesota
33	Wiebe, Lillian	Independence, Kansas
34	Wiens, Dorothy	Lustre, Montana
33	Wilson, Donald	Giltner, Nebraska
34	Wuthrich, Arlene	Burns, Kansas

63

Under-graduates

31	Abbott, Donna	Crawford, Nebraska
33	Adrian, Richard	Floodwood, Minnesota
37	Allen, Loretha	Emerson, Iowa
19	Amato, Mrs. Philip	Omaha, Nebraska
35	Anderson, Bonnie	Sioux City, Iowa
28	Andres, Irvin	Elbing, Kansas
31	Aufrecht, Robert	Loup City, Nebraska
34	Baergen, Shirley	Kinsley, Kansas
35	Balzer, Norma	Mountain Lake, Minnesota
33	Barkman, Jacob	Enid, Oklahoma
36	Bartel, Elfrieda	Fairview, Oklahoma
34	Bartel, Leroy	Fairview, Oklahoma
35	Bartsch, Marlyn	Bingham Lake, Minnesota
35	Bartsch, Marlys	Bingham Lake, Minnesota
35	Beauchamp, Dale	Keystone, Nebraska
36	Beauchamp, Mrs. Dale	Brule, Nebraska
36	Becker, Loren	Marion, South Dakota
36	Bergen, Emma	Omaha, Nebraska
22	Billau, Ruth	Halstead, Kansas
33	Boese, Eldon	Vona, Colorado
25	Boese, Robert	Springfield, South Dakota
20	Bornemeier, Harold	Louisville, Nebraska
34	Brandt, Virgil	Rickreall, Oregon
34	Brown, Betty	Mountain Lake, Minnesota
35	Brown, Clarence	Garrison, Iowa
35	Brown, Mrs. Clarence	Garrison, Iowa
33	Buhler, Eleanor	Mountain Lake, Minnesota
35	Buller, Delila	Bessie, Oklahoma
28	Claassen, Melvin	Whitewater, Kansas
34	Claassen, Wynona	Benton, Kansas
34	Classen, Eldin	Meade, Kansas
35	Cobaugh, Janet	Ogallala, Nebraska
35	Cole, Mary	Broken Bow, Nebraska
35	Cole, Pauline	Fonda, Iowa
23	Cramer, Henry	Germany
35	Cullett, Alice	Colorado Springs, Colorado
33	Cullett, Shirley	Colorado Springs, Colorado
36	Dalke, Gerald	Fairbury, Nebraska
34	Dalke, Irvin	Salix, Iowa
33	Dalke, LaDonna	Fairbury, Nebraska
34	Decker, Duwane	Frankfort, South Dakota
35	Deuter, Richard	Culbertson, Nebraska
29	Diamond, Mrs. Paul	Council Bluffs, Iowa
34	Dick, Adella	Mountain Lake, Minnesota
36	Diller, Janice	Bluffton, Ohio
36	Doerksen, Vernelle	Abbotsford, British Columbia, Canada
35	Dorner, James	Omaha, Nebraska
37	Duerksen, Dellene	Butterfield, Minnesota
36	Eck, Jo Ann	Valley Center, Kansas
36	Ediger, Janice	Hampton, Nebraska
35	Edwards, Nancy	Whitewater, Kansas
21	Eleson, Irwin	Whitney, Nebraska
33	Enix, Wayne	Torrington, Wyoming
37	Enns, Marilyn	Gridley, Illinois
31	Entz, Walter	Whitewater, Kansas

35	Epp, Herbert	Lincoln, Nebraska
36	Epp, John	Whitewater, Kansas
36	Epp, Lillian	Henderson, Nebraska
34	Epp, Marvin	Henderson, Nebraska
22	Estabrook, Gordon	Ansonia, Connecticut
34	Fast, Bertha	Moundridge, Kansas
21	Fast, David	Conway, Kansas
35	Fast, Elisabeth	Henderson, Nebraska
36	Fast, Evelyn	Henderson, Nebraska
36	Fast, Henrich	Moundridge, Kansas
33	Fast, Myron	Freeman, South Dakota
36	Fast, Robert	Butterfield, Minnesota
1889	Faucett, Mrs. Mary	Omaha, Nebraska
36	Faurot, Lyle	Lamar, Missouri
30	Fitch, Richard	Council Bluffs, Iowa
36	Flickinger, Leona	Medford, Oklahoma
34	Flickinger, Marvin	Oriente, Oklahoma
23	Franke, Reuben	Mauston, Wisconsin
36	Franz, Elvina	Henderson, Nebraska
36	Frey, Robert	Omaha, Nebraska
19	Friesen, Abraham	Munich, North Dakota
33	Friesen, Alvin	Meade, Kansas
33	Friesen, Arlene	Mountain Lake, Minnesota
36	Friesen, Evelyn	Henderson, Nebraska
36	Friesen, James	Bingham Lake, Minnesota
35	Friesen, Marilyn	Geneva, Nebraska
35	Friesen, Norman	Meade, Kansas
36	Friesen, Verona	Bingham Lake, Minnesota
32	Froese, Edna	Inola, Oklahoma
34	Fuls, Lois	Omaha, Nebraska
26	Giesbrecht, Pete	Lorette, Manitoba, Canada
34	Gillett, Robert	Crawford, Nebraska
26	Givens, Hoyt	Kansas City, Missouri
16	Glanzer, Rebecca	Bridgewater, South Dakota
33	Glover, Lela	Broken Bow, Nebraska
35	Glover, Paul	Broken Bow, Nebraska
21	Goertz, Wilbur	Valley Center, Kansas
36	Goertzen, Eugene	Floodwood, Minnesota
31	Goossen, Susie	Colby, Kansas
34	Graber, Donald	Hutchinson, Kansas
34	Gravett, Stanley	Wessington, South Dakota
34	Griffin, Gary	Omaha, Nebraska
35	Hamm, Charlotte	Hooker, Oklahoma
36	Hamm, Leonard	Hooker, Oklahoma
35	Harder, Betty	Meade, Kansas
36	Harder, Carroll	Benton, Kansas
35	Harder, Doris	Waka, Texas
36	Harder, Milton	Butterfield, Minnesota
35	Harder, Norma	Inman, Kansas
33	Hardy, Donna	Council Bluffs, Iowa
35	Harmon, Charles	Omaha, Nebraska
34	Harms, Chryston	Cleo Springs, Oklahoma
36	Harms, Dale	Madrid, Nebraska
29	Hartso, William	Lenoir, North Carolina
35	Havens, Edna	Henderson, Nebraska
29	Haynes, Edwin	Omaha, Nebraska

30	Haynes, Mrs. Edwin	Omaha, Nebraska
37	Hebbert, Audrey	Gordon, Nebraska
36	Hebbert, Dale	Gordon, Nebraska
35	Heide, Lavina	Mountain Lake, Minnesota
34	Heinrichs, Lillian	Dinuba, California
35	Hiebert, Anna Lee	Custer, Washington
34	Hiebner, Selma	Henderson, Nebraska
32	Hilty, Wendolyn	Lynden, Washington
36	Hines, Deane	Mooreland, Oklahoma
35	Hofer, Gordon	Dolton, South Dakota
35	Hofrichter, Jewel	Wood River, Nebraska
24	Hohndorf, Alvin	Shelby, Nebraska
35	Holzworth, Karen	Glendive, Montana
35	Honeywell, Alberta	Neligh, Nebraska
35	Hooge, David	Windom, Minnesota
32	Hooge, Joanna	Corn, Oklahoma
17	Huebert, Frank	Elsie, Nebraska
31	Huey, Richard	Omaha, Nebraska
37	Isaac, Dean	Meade, Kansas
35	Isaac, Erna	Meade, Kansas
32	Janis, Donald	Omaha, Nebraska
24	Jantz, Arthur	Newton, Kansas
36	Jantzen, Helen	Clinton, Oklahoma
19	Janz, John	Steinbach, Manitoba, Canada
32	Janzen, Orlando	Munich, North Dakota
17	Janzen, Waldo	Goessel, Kansas
30	Jefferson, Phillip	Des Moines, Iowa
34	Johnson, Anna	Montezuma, Kansas
35	Johnson, Arthur	Ringwood, Oklahoma
13	Keifer, Verna	Bluffton, Ohio
36	Kent, Wanda	Clearwater, Nebraska
14	Klassen, Albert	Hillsboro, Kansas
35	Klassen, Doris	Lehigh, Kansas
30	Klassen, Walter	Rosemary, Alberta, Canada
36	Kliewer, Richard	Caldwell, Idaho
19	Kliewer, Ruben	Okeene, Oklahoma
34	Koehn, Abner	Enid, Oklahoma
35	Koehn, June	Isabella, Oklahoma
35	Koehn, Ruby	Orienta, Oklahoma
36	Krause, Phyllis	North Platte, Nebraska
33	Krehbiel, Don	Omaha, Nebraska
35	Krehbiel, Joyce	Newport, Washington
35	Kroeker, Alice	Fairbury, Nebraska
34	Kroeker, Menno	Steele City, Nebraska
34	Kulp, Bennett	Perkasie, Pennsylvania
36	Langenegger, Orrine	Newton, Kansas
36	Letkemann, Adeline	Abbotsford, British Columbia, Canada
32	Letkeman, Catherine	Swift Current, Saskatchewan, Canada
35	Loewen, Lydia	Meade, Kansas
35	Loewen, Merle	Meade, Kansas
35	Lutke, Doris	Floodwood, Minnesota
33	Lutke, Ray	Floodwood, Minnesota
33	Manning, Grace	Belgian, Congo
29	Markus, Earl	Creston, Iowa
34	Martin, Lois	Toronto, Kansas
36	Meade, Gary	Fremont, Nebraska

34	Motis, Francis	Isbel, South Dakota
34	Mouttet, Willis	Harper, Kansas
34	Mouttet, Mrs. Willis	Harper, Kansas
29	Murnan, Charles	Chicago, Illinois
34	Murrow, Marilyn	Bondurant, Iowa
35	Nachtigal, Inez	Aurora, Nebraska
36	Nickel, Glen	Corn, Oklahoma
30	Niwa, Samuel	Japan
33	Oller, Richard	Canistota, South Dakota
34	Ortmann, Martha	Wolf Point, Montana
31	Ortmann, Ruth	Wolf Point, Montana
28	Pankratz, Leo	Butterfield, Minnesota
36	Pankratz, Lois	Inola, Oklahoma
32	Parke, Harold	Kadoka, South Dakota
37	Pekrul, Lavonne	Goltry, Oklahoma
36	Penner, Elsie	Lushton, Nebraska
25	Penner, Mary	Altona, Manitoba, Canada
33	Peters, Phyllis	Mountain Lake, Minnesota
20	Philpott, Merle	Chadron, Nebraska
34	Plett, Donnie	Turpin, Oklahoma
32	Pollock, Robert	Iron Mountain, Michigan
35	Rahn, Lois	Three Forks, Montana
33	Rasmussen, Alston	Neligh, Nebraska
35	Ratzlaff, Shirley	Meno, Oklahoma
32	Regier, Bernhard	Newton, Kansas
26	Regier, Darlene	Peabody, Kansas
35	Regier, Marion	Swift Current, Saskatchewan, Canada
27	Reiland, Gilbert	Harvey, North Dakota
22	Reimer, Elmer	Steinbach, Manitoba, Canada
28	Riffel, Jack	Newport, Washington
25	Roth, Harold	Silverton, Oregon
29	Rundlett, Lawrence	Cromwell, Iowa
36	Sabacky, Joanne	Omaha, Nebraska
36	Sackett, Johnny	Lincoln, Nebraska
28	Safford, Frances	Waterloo, Nebraska
35	Safford, Mary	Waterloo, Nebraska
36	Sawyer, Kay	North Loup, Nebraska
36	Schmidt, Dorothy	Omaha, Nebraska
33	Schmidt, Mary Lou	Cordell, Oklahoma
29	Schmidt, Loyal	Waldheim, Saskatchewan, Canada
33	Schmidt, Robert	Omaha, Nebraska
35	Scholl, Sam	Bingham Lake, Minnesota
34	Scholl, Walter	Bingham Lake, Minnesota
36	Schrag, Betty	Pretty Prairie, Kansas
35	Schrag, Elwyn	Pretty Prairie, Kansas
37	Schrag, Marlin	Pretty Prairie, Kansas
36	Schroeder, Elaine	Inman, Kansas
36	Schroeder, Rosella	Inman, Kansas
37	Schultz, Geraldine	Omaha, Nebraska
32	Schultz, Violet	Omaha, Nebraska
29	Shepley, Gladys	Colfax, Iowa
34	Shum, Darlene	East Omaha, Nebraska
33	Slick, Ferne	Bedford, Pennsylvania
22	Smith, Charles	Middletown, Ohio
08	Smith, Mrs. Henry	Omaha, Nebraska
24	Smith, Keith	Adrian, Michigan

56

35 Sommers, Gary ..... Potwin, Kansas  
 28 Sprunger, Gerald ..... Berne, Indiana  
 33 Staab, Orié ..... Ansley, Nebraska  
 36 Stadtlander, Joyce ..... Mountain Lake, Minnesota  
 34 Stall, Patricia ..... Gibbon, Nebraska  
 33 Stoesz, Marjorie ..... Butterfield, Minnesota  
 35 Stoll, Bette ..... Kismet, Kansas  
 37 Stovall, George ..... Syracuse, Nebraska  
 33 Stucky, Alfred ..... Monroe, Washington  
 35 Stucky, Robert ..... Monroe, Washington  
 24 Studebaker, Willard ..... Keystone, Oklahoma  
 06 Stull, Harry ..... Veteran, Wyoming  
 36 Sullivan, Clyde ..... Haxtun, Colorado  
 35 Sulser, Dorothy ..... Des Moines, Iowa  
 31 Taptto, Patricia ..... Lawton, Oklahoma  
 35 Thiessen, Floyd ..... Whitewater, Kansas  
 36 Thiessen, Lovella ..... Inman, Kansas  
 34 Thiessen, Simon ..... Dalmeny, Saskatchewan, Canada  
 29 Thurman, George ..... Berwick, Iowa  
 34 Thurman, Mrs. George ..... Berwick, Iowa  
 33 Tieszen, Clarence ..... Beatrice, Nebraska  
 36 Tincher, Regina ..... Tahlequah, Oklahoma  
 16 Toews, Ted ..... Dallas, Oregon  
 18 Toews, Mrs. Ted ..... Dallas, Oregon  
 22 Trautman, Laurence ..... Sutton Nebraska  
 34 Unruh, Maxine ..... Wichita, Kansas  
 36 Vogt, Dorothy ..... Hesston, Kansas  
 35 Vogt, Wilma ..... Newton, Kansas  
 35 Voth, Donald ..... Inola, Oklahoma  
 36 Wall, Ann ..... Frazer, Montana  
 15 Walter, Eldon ..... Hitchcock, South Dakota  
 23 Walter, Johnnie ..... Carpenter, South Dakota  
 31 Watke, Edward ..... Columbus, Nebraska  
 33 Wedel, Elda ..... Newton, Kansas  
 32 Wedel, Ethel ..... Newton, Kansas  
 32 Weigand, Virginia ..... Cherokee, Oklahoma  
 35 Weigold, Elaine ..... Mountain Lake, Minnesota  
 37 Weigold, Mary ..... Mountain Lake, Minnesota  
 23 Whittington, John ..... Boone, North Carolina  
 32 Widmer, Nathan ..... Colfax, Washington  
 36 Wiebe, Eileen ..... Newton, Kansas  
 28 Wiens, Marianna ..... Mountain Lake, Minnesota  
 27 Wipf, Elbert ..... Carpenter, South Dakota  
 35 Wohlgemuth, Loretta ..... Hooker, Oklahoma  
 28 Woodard, James ..... Des Moines, Iowa  
 34 Wright, Shirley ..... Shenandoah, Iowa  
 28 Yount, Earl ..... Lenoir, North Carolina  
 36 Zuercher, Floyd ..... Benton, Kansas  
 18 Zuercher, Kenneth ..... Lima, Ohio

49

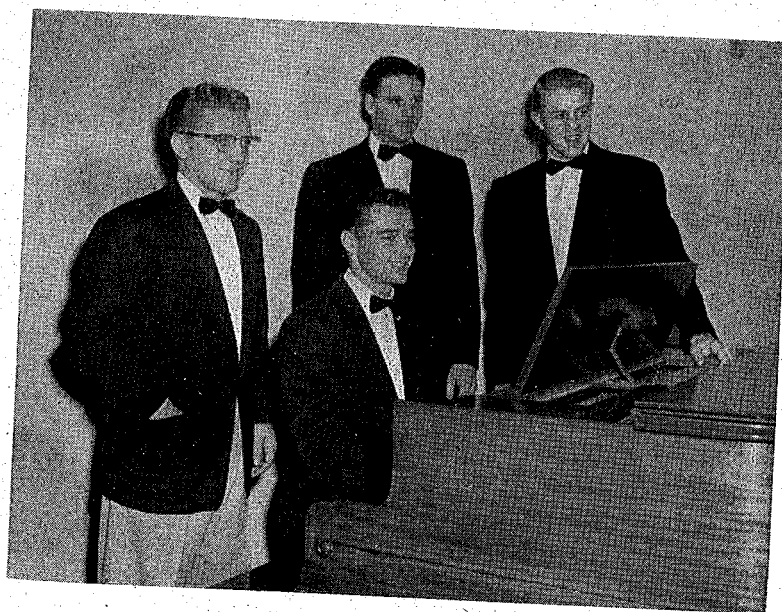
## Analysis of Enrollment

### By States

Arkansas ..... 1	Minnesota .....32	Pennsylvania ..... 2
California ..... 2	Missouri ..... 4	South Dakota .....15
Colorado ..... 4	Montana ..... 9	Texas ..... 1
Connecticut ..... 1	Nebraska .....81	Washington ..... 7
Idaho ..... 1	New York ..... 1	Wisconsin ..... 1
Illinois ..... 2	North Carolina ..... 3	Wyoming ..... 2
Indiana ..... 2	North Dakota ..... 5	Canada .....15
Iowa .....20	Ohio ..... 6	Africa ..... 1
Kansas .....65	Oklahoma .....34	Germany ..... 1
Michigan ..... 2	Oregon ..... 4	Japan ..... 1

### By Denomination

American Mennonite .....2	Federated .....1
Baptist .....36	Gen. Conference Mennonite .122
Brethren .....2	Independent Mennonite .....5
Christian Missionary Alliance .13	Krimmer Mennonite Brethren 15
Church of God .....1	Lutheran .....3
Congregational .....1	Mennonite Brethren .....23
Evangelical Free Church .....2	Methodist .....5
Evangelical Mennonite Church .3	Presbyterian .....10
Evan. Menn. Church (Canada) 2	United Missionary Church .....1
Evangelical Menn. Brethren ....43	Interdenominational .....22
Evangelical United Brethren .....1	Unaffiliated .....12



**Grace Notes Quartet**



## THE EVENING SCHOOL

Grace Bible Institute will continue to offer Evening Bible Study classes to those in Omaha who must be employed during the day. All subjects will be taught by the regular faculty and are the equivalent of day school courses.

### Class Schedule

Classes meet on Monday or Thursday evenings from 7:00-9:30 p. m. for 3 credits. Classes are so arranged that an Evening School student may enroll for either one or two evenings a week and earn from 3 to 6 hours of credit per semester.

### Description of Courses

Courses to be offered will be determined by the demand. At least one course in Bible Exposition is offered each semester. Others include: Personal Evangelism, Teacher Training, Missions, etc.

### Entrance Requirements

1. Approved Christian character; born again.
2. Age: 18 or over, unless a graduate of a four year high school.
3. Application. Advance application is not required.
4. All Evening School students must agree to abide by the same general regulations as Day School students.

### Expenses

Tuition—\$6.00 per semester hour credit.  
Registration fee—\$3.00.  
Late registration fee—\$1.00.

### Auditing

Those who do not care to take their work for credit may, if they so choose, audit the classes for their own personal pleasure. Fees are the same as for credit work.

### Calendar 1955-1956

#### First Semester

September 12—Registration (7 p. m.); classes begin.  
September 26—Last day of late registration.  
October 31-November 4—No classes (Bible Conference Week).  
November 23—Thanksgiving vacation begins.  
November 29—Classes resume.  
December 16—Christmas vacation begins.  
January 3—Classes resume.  
January 16-20—Final Examinations.

#### Second Semester

January 23—Registration (7 p. m.); classes begin.  
February 6—Last day of late registration.  
March 19-23—No classes (Missionary Rally Week).  
May 7-11—Final Examinations.  
May 13-16—School closing exercises.





## *An Opportunity*

The work of the Grace Bible Institute is carried on in full dependence upon God. It is a faith work. As tuition charges are inadequate to cover the operating expenses, the continuance of the work depends upon the faithfulness of God's stewards.

To those who by their gifts have made this work possible, we express our sincere thanks. To those who would like to have a part in the training of workers for Christian service, we present this opportunity.

Address all correspondence to the  
**GRACE BIBLE INSTITUTE**  
1515 South Tenth Street  
Omaha 8, Nebraska



RIHA PRINTING CO. — OMAHA

(68)

